

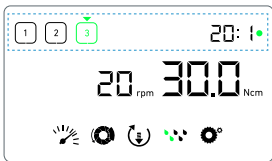
# MegaGen's New heart beats

The Original Technology from BienAir

# IMPLANTOLOGY MEG-ENGINE II

## Pre-set Surgical Protocols

Thanks to the pre-set surgical protocols, you can carry out your procedures in no time.



## Intuitive Navigation

With its single rotary knob, navigation is easier than ever before. Simply turn the knob to scroll through the menus, then click to confirm your choice.



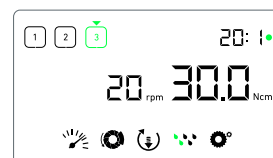
## Absolute Precision Torque

Thanks to its high-precision electronic system, the torque selected on the console corresponds exactly to the torque obtained at the output of your instrument.



## Clear & Concise Interface

The simple and discreet screen provides you with access to all the information you need to ensure your procedure is a success: choice of handpiece, speed, torque, irrigation flow and direction of rotation.



# MEG-ENGINE II

## Components



### 1. MEG-ENGINE II PURE SIMPLICITY

#### Advantages

- Pre-set surgical protocol
- Intuitive control knob
- Patented irrigation system
- Smart foot pedal
- Easy to clean device

### 2. Contra-angle Handpiece

It has an irrigation system which is internal to the instrument – a world first.

#### Micro-Series CA 20:1 L

- Multi-strand optical glass technology
- Internal irrigation and Kirschner Meyer
- Rotation speed: **Maximum 2,000 rpm**
- Withstand more than 1600uses @ 70 Ncm

### 3. Electric Motor

#### Electric motor – MX-I LED

#### Design of Brushless Micromotor

Maximum torque at motor: **5 Ncm**

Motor speed range in the rated voltage range:

**100 – 40,000 rpm**

- With LED
- With Compact design – Improved power and Maneuverability
- With NOISE LEVELS REDUCED AND LESS VIBRATIONS

### 4. ROTARY KNOB INTUITIVE CONTROL KNOB

- With its single rotary knob, navigation is easier than ever before.
- Sterilizble rotary knob

The Original Technology from W&H

# IMPLANTOLOGY

## MEG-ENGINE III

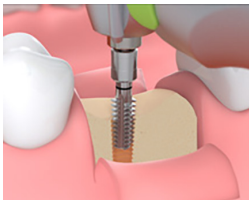
### Simple for a stable implant

The automatic torque control offers you support in the safe insertion of implants.



### Thread cutter function stress free healing

Use the automatic thread cutter function to insert implants in hard bone. The thread cutter function prevents excessive compression of the bone when inserting the implant.



### Powerful Electric motor

With this powerful electric motor even difficult implantological procedures no longer demand great strength



### Fatigue - free operation

In combination the short motor and the ergonomically shaped contra-angle handpiece are perfectly balanced. You can work for long periods without fatigue or cramp in your hand.



# MEG-ENGINE III

## Components



### 1. MEG-ENGINE III

#### Your reliable partner in implantology!

##### Advantages

- Easy to use
- Automatic thread cutter function



### 2. Contra-angle Handpiece

The surgical contra-angle handpieces with mini LED+ and generator.

##### WS-75L G (20:1)

- Mini LED+ and generator
- Single Spray (Kirschner/Meyer)
- Maximum drive speed: **40,000 min<sup>-1</sup>**



### 3. Electric Motor

##### Electric motor – EM-19

Maximum torque at motor: **6.2 Ncm**

Motor speed range in the rated voltage range:  
**200 – 40,000 rpm**

- Without LED+
- Without Electric contacts
- With 1.8m cable



### 4. Button System

#### Ease of operation

Set up all the steps for an implantation without difficulty by pressing the plus and minus buttons on the unit or by operating the foot control.



The Original Technology from W&H

# IMPLANTOLOGY

## MEG-ENGINE III PRO

### Automatic Torque control

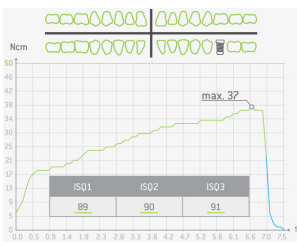
The torque can be precisely adjusted from 5 to 80 Ncm and ensures the necessary safety when inserting implants.



### Powerful Electric motor

Now possible

Activate the documentation function and document treatments and their results. That offers you extra security ensures quality and reinforces your patient's confidence.



### Fatigue - free operation

The Wireless foot control offers absolute freedom of movement. Choose the optimal site for the foot control within your working area.



# MEG-ENGINE III PRO

## Components



### 1. MEG-ENGINE III PRO Implantmed knows what surgeons and implantologists need!

#### Advantages

- Colour touch screen
- Intuitive user interface
- New pump design



### 2. Contra-angle Handpiece

The new surgical contra-angle handpieces with mini LED+ and W&H connection.

#### WS-75L (20:1)

- Mini LED+
- Single Spray (Kirschner/Meyer)
- Maximum drive speed: **50,000 min<sup>-1</sup>**



### 3. Electric Motor

#### Electric motor – EM-19LC

Maximum torque at motor: **6.2 Ncm**

Motor speed range in the rated voltage range:  
**200 – 40,000 rpm**

- With LED+
- With Electric contacts
- With 1.8m cable



### 4. Foot control The new foot control – One for all !

Incredible easy to use in between the Implantmed.

#### S-NW + CAN

- Flexible and ergonomic
- Wireless foot control

# New

## MEG-ENGINE Series

Technical data			
	MEG-ENGINE II	MEG-ENGINE III	MEG-ENGINE III PRO
Types			
Voltage	100V, 120V, 240V	115V, 230V	100V, 115V, 230V
Frequency	50-60 Hz	50-60 Hz	50-60 Hz
Coolant flow rate at 100%	30 ml/min (at least)	90 ml/min (at least)	90 ml/min (at least)
Main fuse	250 V - T 4.0 AH	250 V - T 1.6 AH	250 V - T 1.6 AH
Maximum Torq	70 Ncm	70 Ncm	80 Ncm
Motor Speed range	100 – 40,000 min <sup>-1</sup>	300 – 40,000 min <sup>-1</sup>	200 – 40,000 min <sup>-1</sup>
Dimensions (W X L X H) (mm)	240mm(W) x 240mm(L) x 102mm(H)	235mm(W) x 240mm(L) x 100mm(H)	262mm(W) x 291mm(L) x 100mm(H)
Weight(kg)	2.2	2.7	3.5
Operation Control	Knob	Button	Touch Screen
Optic System	O	O	O
PRE-SET Surgical Protocols	O	X	O
Data Storage Mode	X	X	O