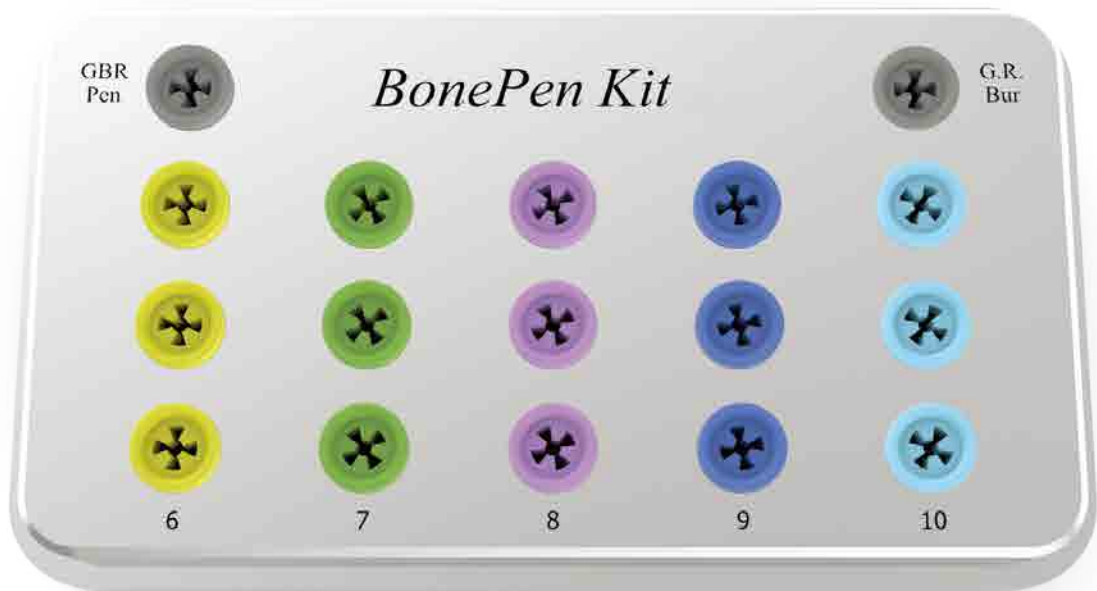


Meg-Align System

by MEGA'GEN

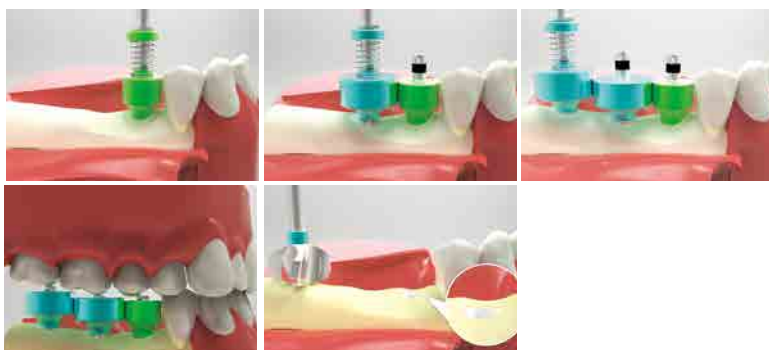
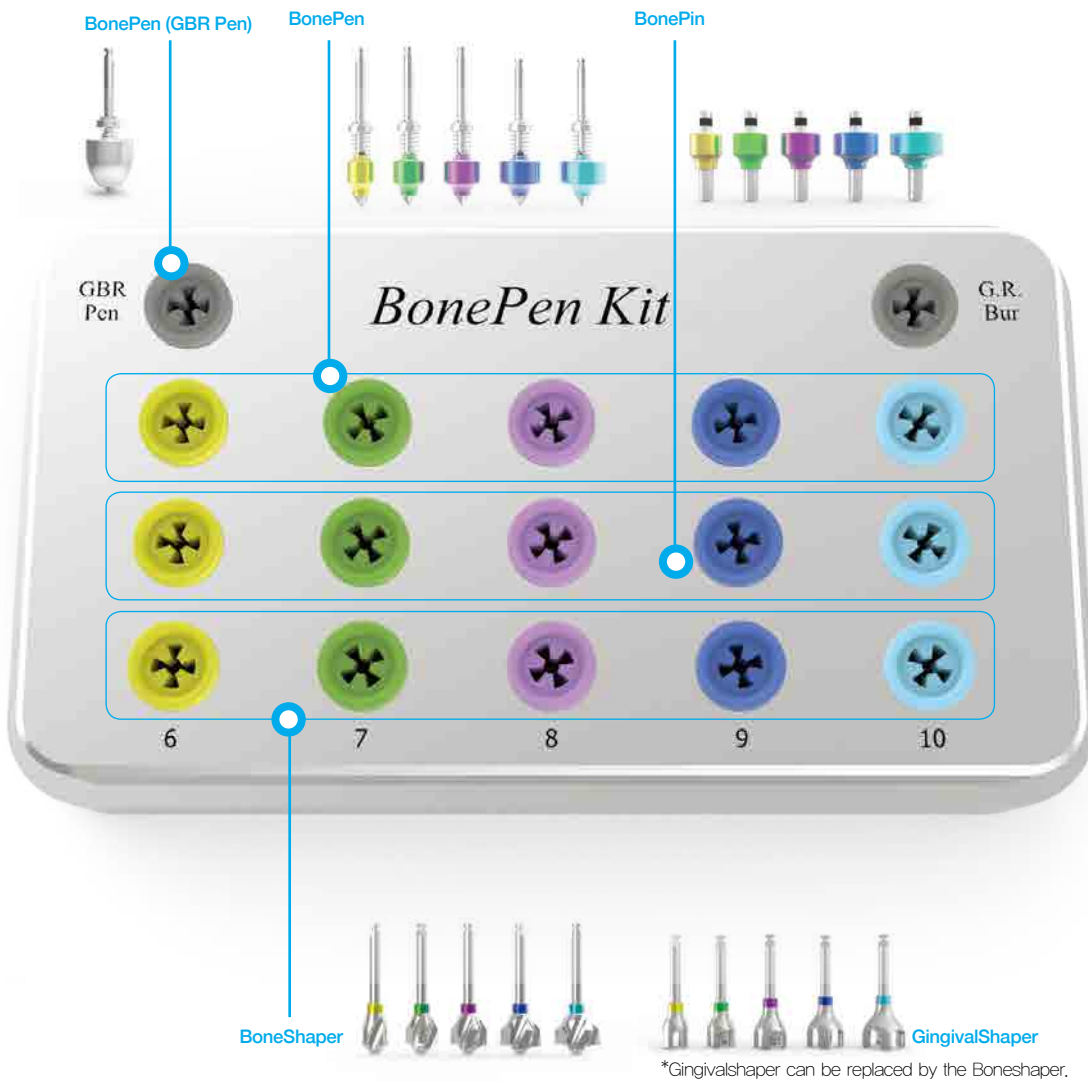


Meg-Align System

I. BonePen kit

Just follow color band, and get simplicity & accuracy for Initial Drilling/ Path Guide/ Bone Collection

Ref.C
BPPRO3



Implant surgical guide

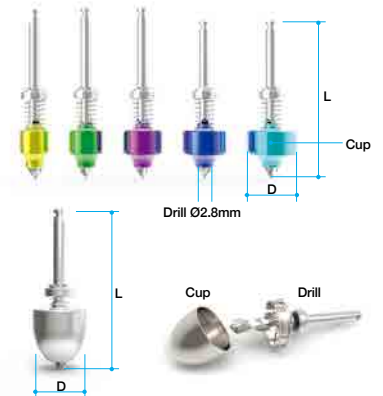
Consider BonePens and BonePins as teeth. They guide implant position with their diameters (BonePens, BonePins) and heights(BonePins). Excess alveolar bones above fixture can be trimmed out with BoneShaper.

➔ BonePen kit Components

BonePen

- BonePen is the second brand name of Auto-Max.
- Implant surgical guide for Implant initial drilling & Bone collection.
- Decortification & Bone collection
Capacity of GBR Pen is approximately 0.4cc.

Mark	Diameter	Color	Length(mm)	Ref.C
6Pen	Ø6.0	Yellow	33.0	BP6MV2
7Pen	Ø7.0	Green	33.0	BP7MV2
8Pen	Ø8.0	Violet	33.0	BP8MV2
9Pen	Ø9.0	Blue	30.5	BP9SV2
10Pen	Ø10	SkyBlue	30.5	BP10SV2
GBR Pen	Ø10.0	N/A	29.5	BPGBR



BonePin

- Excess alveolar bone above fixture can be trimmed out with BoneShaper.

Mark	Diameter	Color	Length(mm)	Ref.C
6Pin	Ø6.0	Yellow	7.0	BPP6V3
7Pin	Ø7.0	Green		BPP7V3
8Pin	Ø8.0	Violet		BPP8V3
9Pin	Ø9.0	Blue		BPP9V3
10Pin	Ø10.0	SkyBlue		BPP10V3



BoneShaper

- BoneShaper is the second brand name of Bone Profiler
- Analog of natural tooth.
(3D positioning guide_ Bucco-lingual, Mesio-distal, Vertical dimension gauge)

Mark	Diameter	Color	Length(mm)	Ref.C
6BoneShper	Ø5.8	Yellow	28.0	BS06V3
7BoneShper	Ø6.8	Green		BS07V3
8BoneShper	Ø7.8	Violet		BS08V3
9BoneShper	Ø8.8	Blue		BS09V3
10BoneShper	Ø9.8	SkyBlue		BS10V3



GingivalShaper

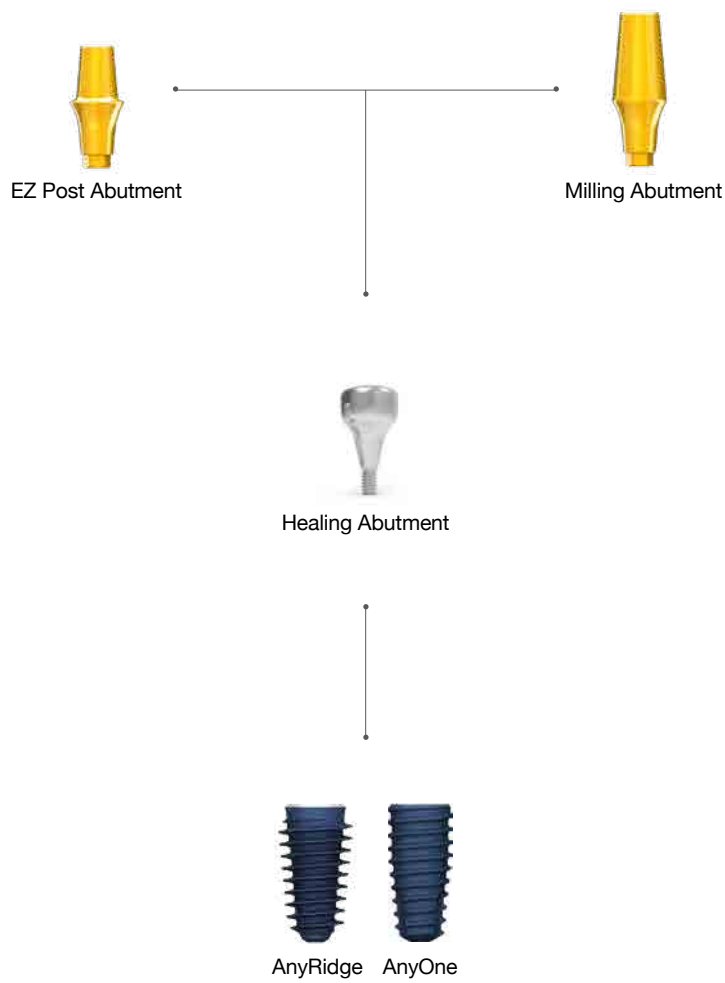
- GingivalShaper is the second brand name of Tissue Punch.
- Emergency instrument for cutting gingiva

Mark	Diameter D1 D2	Color	Length (mm)	Ref.C
6GingivalShper	Ø4.5 Ø5.6	Yellow	28.0	GS06V1
7GingivalShper	Ø5.0 Ø6.6	Green		GS07V1
8GingivalShper	Ø6.0 Ø7.6	Violet		GS08V1
9GingivalShper	Ø7.0 Ø8.6	Blue		GS09V1
10GingivalShper	Ø8.0 Ø9.6	SkyBlue		GS10V1



II. Meg-Align Abutment line-up

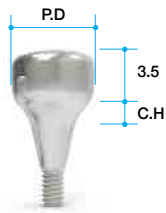
1. Multi Type



➔ Abutment & Components (Continued)

Healing Abutment

- Recommend torque : 5 - 8Ncm(by hand).



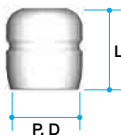
AnyRidge Internal

Mark	Profile Diameter	Cuff Height(mm)	Ref.C
6S	Ø5.4	2.0	ARAH5455
6M		3.5	ARAH5470
6L		5.0	ARAH5485
7S	Ø5.9	2.0	ARAH5955
7M		3.5	ARAH5970
7L		5.0	ARAH5985
8S	Ø6.9	2.0	ARAH6955
8M		3.5	ARAH6970
8L		5.0	ARAH6985
9S	Ø7.9	2.0	ARAH7955
9M		3.5	ARAH7970
9L		5.0	ARAH7985
10S	Ø8.9	2.0	ARAH8955
10M		3.5	ARAH8970
10L		5.0	ARAH8985

AnyOne Internal

Mark	Profile Diameter	Cuff Height(mm)	Ref.C
6S	Ø5.4	2.0	AOAH5455
6M		3.5	AOAH5470
6L		5.0	AOAH5485
7S	Ø5.9	2.0	AOAH5955
7M		3.5	AOAH5970
7L		5.0	AOAH5985
8S	Ø6.9	2.0	AOAH6955
8M		3.5	AOAH6970
8L		5.0	AOAH6985
9S	Ø7.9	2.0	AOAH7955
9M		3.5	AOAH7970
9L		5.0	AOAH7985
10S	Ø8.9	2.0	AOAH8955
10M		3.5	AOAH8970
10L		5.0	AOAH8985

Comfort Cap



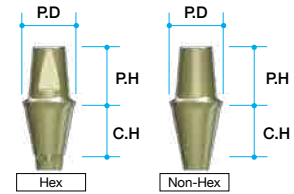
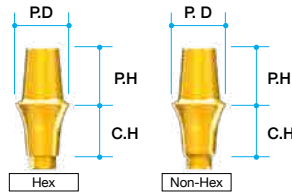
AnyRidge/AnyOne Internal

Profile Diameter	Length (mm)	Ref.C
Ø4.4	6.2	CFCP4462
Ø4.9		CFCP4962
Ø5.9		CFCP5962
Ø6.9		CFCP6962
Ø7.9		CFCP7962

➔ Abutment Options

EZ Post Abutment

- AnyRidge: Multi Post Screw(AANMSF/AANMST) are included.
- AnyOne : Abutment Screw(AOAS0H20) is included
- Recommend torque : 35Ncm



AnyRidge Internal

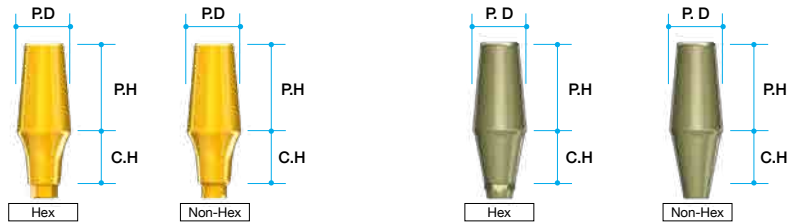
Mark	Profile Diameter	Cuff Height(mm)	Post Height(mm)	Type	Ref.C
6S	Ø4.4	2.0	5.0	Hex	ARAZ4425L
6M		3.5			ARAZ4435L
6L		5.0			ARAZ4455L
6S		2.0		Non-Hex	ARAZ4425NL
6M		3.5		ARAZ4435NL	
6L		5.0		ARAZ4455NL	
7S	Ø4.9	2.0		Hex	ARAZ4925L
7M		3.5			ARAZ4935L
7L		5.0			ARAZ4955L
7S		2.0		Non-Hex	ARAZ4925NL
7M		3.5		ARAZ4935NL	
7L		5.0		ARAZ4955NL	
8S	Ø5.9	2.0	HEX	ARAZ5925L	
8M		3.5		ARAZ5935L	
8L		5.0		ARAZ5955L	
8S		2.0	Non-HEX	ARAZ5925NL	
8M		3.5	ARAZ5935NL		
8L		5.0	ARAZ5955NL		
9S	Ø6.9	2.0	Hex	ARAZ6925L	
9M		3.5		ARAZ6935L	
9L		5.0		ARAZ6955L	
9S		2.0	Non-Hex	ARAZ6925NL	
9M		3.5	ARAZ6935NL		
9L		5.0	ARAZ6955NL		
10S	Ø7.9	2.0	Hex	ARAZ7925L	
10M		3.5		ARAZ7935L	
10L		5.0		ARAZ7955L	
10S		2.0	Non-Hex	ARAZ7925NL	
10M		3.5	ARAZ7935NL		
10L		5.0	ARAZ7955NL		

AnyOne Internal

Mark	Profile Diameter	Cuff Height(mm)	Post Height(mm)	Type	Ref.C
6S	Ø4.4	2.0	5.0	Hex	AOAZ4425T
6M		3.5			AOAZ4435T
6L		5.0			AOAZ4455T
6S		2.0		Non-Hex	AOAZ4425NT
6M		3.5		AOAZ4435NT	
6L		5.0		AOAZ4455NT	
7S	Ø4.9	2.0		Hex	AOAZ4925T
7M		3.5			AOAZ4935T
7L		5.0			AOAZ4955T
7S		2.0		Non-Hex	AOAZ4925NT
7M		3.5		AOAZ4935NT	
7L		5.0		AOAZ4955NT	
8S	Ø5.9	2.0	Hex	AOAZ5925T	
8M		3.5		AOAZ5935T	
8L		5.0		AOAZ5955T	
8S		2.0	Non-Hex	AOAZ5925NT	
8M		3.5	AOAZ5935NT		
8L		5.0	AOAZ5955NT		
9S	Ø6.9	2.0	Hex	AOAZ6925T	
9M		3.5		AOAZ6935T	
9L		5.0		AOAZ6955T	
9S		2.0	Non-Hex	AOAZ6925NT	
9M		3.5	AOAZ6935NT		
9L		5.0	AOAZ6955NT		
10S	Ø7.9	2.0	Hex	AOAZ7925T	
10M		3.5		AOAZ7935T	
10L		5.0		AOAZ7955T	
10S		2.0	Non-Hex	AOAZ7925NT	
10M		3.5	AOAZ7935NT		
10L		5.0	AOAZ7955NT		

Milling Abutment

- AnyRidge: Multi Post Screw(AANMSF/ AANMST) are included.
- AnyOne : Abutment Screw(AOAS0H20) is included
- Recommend torque : 35Ncm



AnyRidge Internal

Mark	Profile Diameter	Cuff Height(mm)	Post Height(mm)	Type	Ref.C
6S	Ø4.4	2.0	8.0	Hex	ARAM4428L
6M		3.5			ARAM4438L
6L		5.0			ARAM4458L
6S		2.0		Non-Hex	ARAM4428NL
6M		3.5		ARAM4438NL	
6L		5.0		ARAM4458NL	
7S	Ø4.9	2.0	8.0	Hex	ARAM4928L
7M		3.5			ARAM4938L
7L		5.0			ARAM4958L
7S		2.0		Non-Hex	ARAM4928NL
7M		3.5		ARAM4938NL	
7L		5.0		ARAM4958NL	
8S	Ø5.9	2.0	8.0	Hex	ARAM5928L
8M		3.5			ARAM5938L
8L		5.0			ARAM5958L
8S		2.0		Non-Hex	ARAM5928NL
8M		3.5		ARAM5938NL	
8L		5.0		ARAM5958NL	
9S	Ø6.9	2.0	8.0	Hex	ARAM6928L
9M		3.5			ARAM6938L
9L		5.0			ARAM6958L
9S		2.0		Non-Hex	ARAM6928NL
9M		3.5		ARAM6938NL	
9L		5.0		ARAM6958NL	
10S	Ø7.9	2.0	8.0	Hex	ARAM7928L
10M		3.5			ARAM7938L
10L		5.0			ARAM7958L
10S		2.0		Non-Hex	ARAM7928NL
10M		3.5		ARAM7938NL	
10L		5.0		ARAM7958NL	

AnyOne Internal

Mark	Profile Diameter	Cuff Height(mm)	Post Height(mm)	Type	Ref.C
6S	Ø4.4	2.0	8.0	Hex	AOAM4428T
6M		3.5			AOAM4438T
6L		5.0			AOAM4458T
6S		2.0		Non-Hex	AOAM4428NT
6M		3.5		AOAM4438NT	
6L		5.0		AOAM4458NT	
7S	Ø4.9	2.0	8.0	Hex	AOAM4928T
7M		3.5			AOAM4938T
7L		5.0			AOAM4958T
7S		2.0		Non-Hex	AOAM4928NT
7M		3.5		AOAM4938NT	
7L		5.0		AOAM4958NT	
8S	Ø5.9	2.0	8.0	Hex	AOAM5928T
8M		3.5			AOAM5938T
8L		5.0			AOAM5958T
8S		2.0		Non-Hex	AOAM5928NT
8M		3.5		AOAM5938NT	
8L		5.0		AOAM5958NT	
9S	Ø6.9	2.0	8.0	Hex	AOAM6928T
9M		3.5			AOAM6938T
9L		5.0			AOAM6958T
9S		2.0		Non-Hex	AOAM6928NT
9M		3.5		AOAM6938NT	
9L		5.0		AOAM6958NT	
10S	Ø7.9	2.0	8.0	Hex	AOAM7928T
10M		3.5			AOAM7938T
10L		5.0			AOAM7958T
10S		2.0		Non-Hex	AOAM7928NT
10M		3.5		AOAM7938NT	
10L		5.0		AOAM7958NT	

II. Meg-Align Abutment line-up

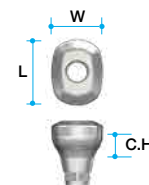
2. Single Type



➔ Abutment Options (Continued)

Healing Abutment

- These options are able to make esthetic restorations.
- It is divided into Abutments for incisor and canine, premolar, molar sites depending on the diameter.
- 2piece type.
- AnyRidge: Multi Post Screw(AANMSF) is included.
- AnyOne : Abutment Screw(PAOAS2009) is included.
- Recommend torque : 5 - 8Ncm(by hand)



AnyRidge Internal

Mark	Diameter		Cuff Height(mm)	Type	Ref.C
	W	L			
6S	Ø3.4	Ø4.4	2.0	Hex	PARH1R3420T
6M			3.5		PARH1R3435T
6L			5.0		PARH1R3450T
6S			2.0		PARH1R3420NT
6M			3.5		PARH1R3435NT
6L			5.0		PARH1R3450NT
6S	Ø4.4	Ø4.5	2.0	Hex	PARH1R4420T
6M			3.5		PARH1R4435T
6L			5.0		PARH1R4450T
6S			2.0		PARH1R4420NT
6M			3.5		PARH1R4435NT
6L			5.0		PARH1R4450NT
7S	Ø4.9	Ø5.0	2.0	Hex	PARH2R5520T
7M			3.5		PARH2R5535T
7L			5.0		PARH2R5550T
7S			2.0		PARH2R5520NT
7M			3.5		PARH2R5535NT
7L			5.0		PARH2R5550NT
8S	Ø4.9	Ø5.9	2.0	Hex	PARH3R5620T
8M			3.5		PARH3R5635T
8L			5.0		PARH3R5650T
8S			2.0		PARH3R5620NT
8M			3.5		PARH3R5635NT
8L			5.0		PARH3R5650NT
9S	Ø6.9	Ø6.9	2.0	Hex	PARH3R5720T
9M			3.5		PARH3R5735T
9L			5.0		PARH3R5750T
9S			2.0		PARH3R5720NT
9M			3.5		PARH3R5735NT
9L			5.0		PARH3R5750NT
9S	Ø5.9	Ø6.9	2.0	Hex	PARH3R6720T
9M			3.5		PARH3R6735T
9L			5.0		PARH3R6750T
9S			2.0		PARH3R6720NT
9M			3.5		PARH3R6735NT
9L			5.0		PARH3R6750NT
10S	Ø6.9	Ø7.9	2.0	Hex	PARH4R6820T
10M			3.5		PARH4R6835T
10L			5.0		PARH4R6850T
10S			2.0		PARH4R6820NT
10M			3.5		PARH4R6835NT
10L			5.0		PARH4R6850NT
10S	Ø6.9	Ø7.9	2.0	Hex	PARH4R7820T
10M			3.5		PARH4R7835T
10L			5.0		PARH4R7850T
10S			2.0		PARH4R7820NT
10M			3.5		PARH4R7835NT
10L			5.0		PARH4R7850NT

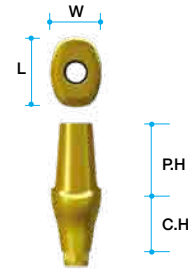
AnyOne Internal

Mark	Diameter		Cuff Height(mm)	Type	Ref.C
	W	L			
6S	Ø4.4	Ø3.4	2.0	Hex	PAOH1R3420T
6M			3.5		PAOH1R3435T
6L			5.0		PAOH1R3450T
6S			2.0		PAOH1R3420NT
6M			3.5		PAOH1R3435NT
6L			5.0		PAOH1R3450NT
6S	Ø4.5	Ø4.4	2.0	Hex	PAOH1R4420T
6M			3.5		PAOH1R4435T
6L			5.0		PAOH1R4450T
6S			2.0		PAOH1R4420NT
6M			3.5		PAOH1R4435NT
6L			5.0		PAOH1R4450NT
7S	Ø5.0	Ø5.0	2.0	Hex	PAOH2R5520T
7M			3.5		PAOH2R5535T
7L			5.0		PAOH2R5550T
7S			2.0		PAOH2R5520NT
7M			3.5		PAOH2R5535NT
7L			5.0		PAOH2R5550NT
8S	Ø4.9	Ø5.9	2.0	Hex	PAOH3R5620T
8M			3.5		PAOH3R5635T
8L			5.0		PAOH3R5650T
8S			2.0		PAOH3R5620NT
8M			3.5		PAOH3R5635NT
8L			5.0		PAOH3R5650NT
9S	Ø6.9	Ø6.9	2.0	Hex	PAOH3R5720T
9M			3.5		PAOH3R5735T
9L			5.0		PAOH3R5750T
9S			2.0		PAOH3R5720NT
9M			3.5		PAOH3R5735NT
9L			5.0		PAOH3R5750NT
9S	Ø5.9	Ø6.9	2.0	Hex	PAOH3R6720T
9M			3.5		PAOH3R6735T
9L			5.0		PAOH3R6750T
9S			2.0		PAOH3R6720NT
9M			3.5		PAOH3R6735NT
9L			5.0		PAOH3R6750NT
10S	Ø6.9	Ø7.9	2.0	Hex	PAOH4R6820T
10M			3.5		PAOH4R6835T
10L			5.0		PAOH4R6850T
10S			2.0		PAOH4R6820NT
10M			3.5		PAOH4R6835NT
10L			5.0		PAOH4R6850NT
10S	Ø6.9	Ø7.9	2.0	Hex	PAOH4R7820T
10M			3.5		PAOH4R7835T
10L			5.0		PAOH4R7850T
10S			2.0		PAOH4R7820NT
10M			3.5		PAOH4R7835NT
10L			5.0		PAOH4R7850NT

➔ Abutment Options

EZ Post Abutment

- These options are able to make esthetic restorations.
- It is divided into Abutments for incisor and canine, premolar, molar sites depending on the diameter.
- AnyRidge : Multi Post Screws(AANMSF/ AANMST) are included.
- AnyOne : Abutment Screw(PAOAS2009) is included.
- Recommend torque : 35Ncm



AnyRidge Internal

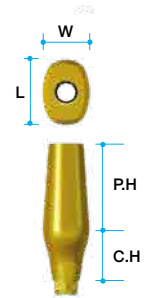
Mark	Diameter		Cuff Height(mm)	Post Height(mm)	Type	Ref.C		
	W	L						
6S	Ø4.4	Ø3.4	2.0	7.0	Hex	PARP1R3427L		
6M			3.5			PARP1R3437L		
6L			5.0			PARP1R3457L		
6S			2.0		Non-Hex	PARP1R3427NL		
6M			3.5			PARP1R3437NL		
6L			5.0			PARP1R3457NL		
6S		Ø4.4	Ø4.4		2.0	Hex	PARP1R4427L	
6M					3.5		PARP1R4437L	
6L					5.0		PARP1R4457L	
6S			2.0		Non-Hex	PARP1R4427NL		
6M			3.5			PARP1R4437NL		
6L			5.0			PARP1R4457NL		
7S	Ø4.9	Ø4.9	2.0	7.0	Hex	PARP2R5527L		
7M			3.5			PARP2R5537L		
7L			5.0			PARP2R5557L		
7S			2.0		Non-Hex	PARP2R5527NL		
7M			3.5			PARP2R5537NL		
7L			5.0			PARP2R5557NL		
8S		Ø5.9	Ø4.9		2.0	7.0	Hex	PARP3R5627L
8M					3.5			PARP3R5637L
8L					5.0			PARP3R5657L
8S					2.0		Non-Hex	PARP3R5627NL
8M					3.5			PARP3R5637NL
8L					5.0			PARP3R5657NL
9S	Ø6.9		Ø4.9	2.0	7.0		Hex	PARP3R5727L
9M				3.5				PARP3R5737L
9L				5.0				PARP3R5757L
9S				2.0			Non-Hex	PARP3R57207L
9M				3.5				PARP3R57357L
9L				5.0				PARP3R57507L
9S		Ø5.9	Ø5.9	2.0		7.0	Hex	PARP3R6727L
9M				3.5				PARP3R6737L
9L				5.0				PARP3R6757L
9S			2.0	Non-Hex			PARP3R6727NL	
9M			3.5				PARP3R6737NL	
9L			5.0				PARP3R6757NL	
10S	Ø7.9	Ø5.9	2.0	7.0	HEX	PARP4R6827L		
10M			3.5			PARP4R6837L		
10L			5.0			PARP4R6857L		
10S			2.0		Non-HEX	PARP4R68207L		
10M			3.5			PARP4R68357L		
10L			5.0			PARP4R68507L		
10S		Ø6.9	Ø6.9		2.0	7.0	Hex	PARP4R7827L
10M					3.5			PARP4R7837L
10L					5.0			PARP4R7857L
10S			2.0		Non-Hex		PARP4R7827NL	
10M			3.5				PARP4R7837NL	
10L			5.0				PARP4R7857NL	

AnyOne Internal

Mark	Diameter		Cuff Height(mm)	Post Height(mm)	Type	Ref.C		
	W	L						
6S	Ø4.4	Ø3.4	2.0	7.0	Hex	PAOP1R3427T		
6M			3.5			PAOP1R3437T		
6L			5.0			PAOP1R3457T		
6S			2.0		Non-Hex	PAOP1R3427NT		
6M			3.5			PAOP1R3437NT		
6L			5.0			PAOP1R3457NT		
6S		Ø4.4	Ø4.4		2.0	Hex	PAOP1R4427T	
6M					3.5		PAOP1R4437T	
6L					5.0		PAOP1R4457T	
6S			2.0		Non-Hex	PAOP1R4427NT		
6M			3.5			PAOP1R4437NT		
6L			5.0			PAOP1R4457NT		
7S	Ø4.9	Ø4.9	2.0	7.0	Hex	PAOP2R5527T		
7M			3.5			PAOP2R5537T		
7L			5.0			PAOP2R5557T		
7S			2.0		Non-HEX	PAOP2R5527NT		
7M			3.5			PAOP2R5537NT		
7L			5.0			PAOP2R5557NT		
8S		Ø5.9	Ø4.9		2.0	7.0	Hex	PAOP3R5627T
8M					3.5			PAOP3R5637T
8L					5.0			PAOP3R5657T
8S					2.0		Non-Hex	PAOP3R5627NT
8M					3.5			PAOP3R5637NT
8L					5.0			PAOP3R5657NT
9S	Ø6.9		Ø4.9	2.0	7.0		Hex	PAOP3R5727T
9M				3.5				PAOP3R5737T
9L				5.0				PAOP3R5757T
9S				2.0			Non-Hex	PAOP3R5727NT
9M				3.5				PAOP3R5737NT
9L				5.0				PAOP3R5757NT
9S		Ø5.9	Ø5.9	2.0		7.0	Hex	PAOP3R6727T
9M				3.5				PAOP3R6737T
9L				5.0				PAOP3R6757T
9S			2.0	Non-Hex			PAOP3R6727NT	
9M			3.5				PAOP3R6737NT	
9L			5.0				PAOP3R6757NT	
10S	Ø7.9	Ø5.9	2.0	7.0	Hex	PAOP4R6827T		
10M			3.5			PAOP4R6837T		
10L			5.0			PAOP4R6857T		
10S			2.0		Non-Hex	PAOP4R6827NT		
10M			3.5			PAOP4R6837NT		
10L			5.0			PAOP4R6857NT		
10S		Ø6.9	Ø6.9		2.0	7.0	Hex	PAOP4R7827T
10M					3.5			PAOP4R7837T
10L					5.0			PAOP4R7857T
10S			2.0		Non-Hex		PAOP4R7827NT	
10M			3.5				PAOP4R7837NT	
10L			5.0				PAOP4R7857NT	

Milling Abutment

- These options are able to make esthetic restorations.
- It is divided into Abutments for incisor and canine, premolar, molar sites depending on the diameter.
- AnyRidge : Multi Post Screws(AANMSF/ AANMST) are included.
- AnyOne : Abutment Screw(PAOAS2009) is included.
- Recommend torque : 35Ncm



AnyRidge Internal

Mark	Diameter		Cuff Height(mm)	Post Height(mm)	Type	Ref.C
	W	L				
6S	Ø4.4	Ø3.4	2.0	9.0	Hex	PARM1R3429L
6M			3.5			PARM1R3439L
6L			5.0			PARM1R3459L
6S			2.0		Non-Hex	PARM1R3429NL
6M			3.5		PARM1R3439NL	
6L			5.0		PARM1R3459NL	
6S		Ø4.4	Hex		2.0	PARM1R4429L
6M					3.5	PARM1R4439L
6L					5.0	PARM1R4459L
6S			Non-Hex		2.0	PARM1R4429NL
6M					3.5	PARM1R4439NL
6L					5.0	PARM1R4459NL
7S	Ø4.9	Ø4.9	2.0	9.0	Hex	PARM2R5529L
7M			3.5			PARM2R5539L
7L			5.0			PARM2R5559L
7S			2.0		Non-Hex	PARM2R5529NL
7M			3.5		PARM2R5539NL	
7L			5.0		PARM2R5559NL	
8S		Ø5.9	Hex		2.0	PARM3R5629L
8M					3.5	PARM3R5639L
8L					5.0	PARM3R5659L
8S			Non-Hex		2.0	PARM3R5629NL
8M					3.5	PARM3R5639NL
8L					5.0	PARM3R5659NL
9S	Ø6.9	Ø4.9	2.0	9.0	Hex	PARM3R5729L
9M			3.5			PARM3R5739L
9L			5.0			PARM3R5759L
9S			Non-Hex		2.0	PARM3R5729NL
9M					3.5	PARM3R5739NL
9L					5.0	PARM3R5759NL
9S		Ø5.9	Hex		2.0	PARM3R6729L
9M					3.5	PARM3R6739L
9L					5.0	PARM3R6759L
9S			Non-Hex		2.0	PARM3R6729NL
9M					3.5	PARM3R6739NL
9L					5.0	PARM3R6759NL
10S	Ø7.9	Ø5.9	2.0	9.0	HEX	PARM4R6829L
10M			3.5			PARM4R6839L
10L			5.0			PARM4R6859L
10S			Non-Hex		2.0	PARM4R6829NL
10M					3.5	PARM4R6839NL
10L					5.0	PARM4R6859NL
10S		Ø6.9	HEX		2.0	PARM4R7829L
10M					3.5	PARM4R7839L
10L					5.0	PARM4R7859L
10S			Non-Hex		2.0	PARM4R7829NL
10M					3.5	PARM4R7839NL
10L					5.0	PARM4R7859NL

AnyOne Internal

Mark	Diameter		Cuff Height(mm)	Post Height(mm)	Type	Ref.C
	W	L				
6S	Ø4.4	Ø3.4	2.0	9.0	Hex	PAOM1R3429T
6M			3.5			PAOM1R3439T
6L			5.0			PAOM1R3459T
6S			Non-Hex		2.0	PAOM1R3429NT
6M					3.5	PAOM1R3439NT
6L					5.0	PAOM1R3459NT
6S		Ø4.4	Hex		2.0	PAOM1R4429T
6M					3.5	PAOM1R4439T
6L					5.0	PAOM1R4459T
6S			Non-Hex		2.0	PAOM1R4429NT
6M					3.5	PAOM1R4439NT
6L					5.0	PAOM1R4459NT
7S	Ø4.9	Ø4.9	2.0	9.0	Hex	PAOM2R5529T
7M			3.5			PAOM2R5539T
7L			5.0			PAOM2R5559T
7S			Non-Hex		2.0	PAOM2R5529NT
7M					3.5	PAOM2R5539NT
7L					5.0	PAOM2R5559NT
8S		Ø5.9	Hex		2.0	PAOM3R5629T
8M					3.5	PAOM3R5639T
8L					5.0	PAOM3R5659T
8S			Non-Hex		2.0	PAOM3R5629NT
8M					3.5	PAOM3R5639NT
8L					5.0	PAOM3R5659NT
9S	Ø6.9	Ø4.9	2.0	9.0	Hex	PAOM3R5729T
9M			3.5			PAOM3R5739T
9L			5.0			PAOM3R5759T
9S			Non-Hex		2.0	PAOM3R5729NT
9M					3.5	PAOM3R5739NT
9L					5.0	PAOM3R5759NT
9S		Ø5.9	Hex		2.0	PAOM3R6729T
9M					3.5	PAOM3R6739T
9L					5.0	PAOM3R6759T
9S			Non-Hex		2.0	PAOM3R6729NT
9M					3.5	PAOM3R6739NT
9L					5.0	PAOM3R6759NT
10S	Ø7.9	Ø5.9	2.0	9.0	Hex	PAOM4R6829T
10M			3.5			PAOM4R6839T
10L			5.0			PAOM4R6859T
10S			Non-Hex		2.0	PAOM4R6829NT
10M					3.5	PAOM4R6839NT
10L					5.0	PAOM4R6859NT
10S		Ø6.9	Hex		2.0	PAOM4R7829T
10M					3.5	PAOM4R7839T
10L					5.0	PAOM4R7859T
10S			Non-Hex		2.0	PAOM4R7829NT
10M					3.5	PAOM4R7839NT
10L					5.0	PAOM4R7859NT

►► How to use

1 . BonePen



Use suitable BonePen diameter -Drill tip must reach the alveolar bone.
 Check the position of the alveolar bone to be cut. Adhere product's cuff side to tooth side and use it while the saline is running.
 In order to avoid the BonePen spinning beyond the cutting point, use handpiece with both hands.

2 . BonePin

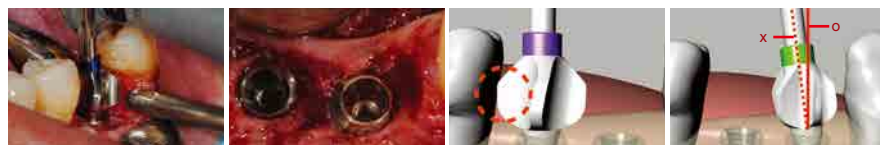


Select a BonePin that has same numbering as BonePen used.
 Insert the bottom of the product as deep as possible into the insertion hole that you have made previously.
 If the bone insertion is completed, visibly assess the gap between product's external diameter and adjacent tooth, also cutting height of the alveolar bone and occlusal surfaces during occlusion.

3 . GBR Pen



4 . BoneShaper



Select a BoneShaper that has same numbering as BonePin used.
 Place BoneShaper onto the center of the fixture, and begin countersinking by pushing it downward.

5 . GingivalShaper



Select a GingivalShaper that is suitable for a diameter of the Abutment used.
 Place GingivalShaper onto Abutment Shoulder, and use a begin countersinking using a hand-piece for 3~5 seconds.

Meg-Align Clinical Case

➔ Clinical Case

- Courtesy of Dr. Jun Ho Lee

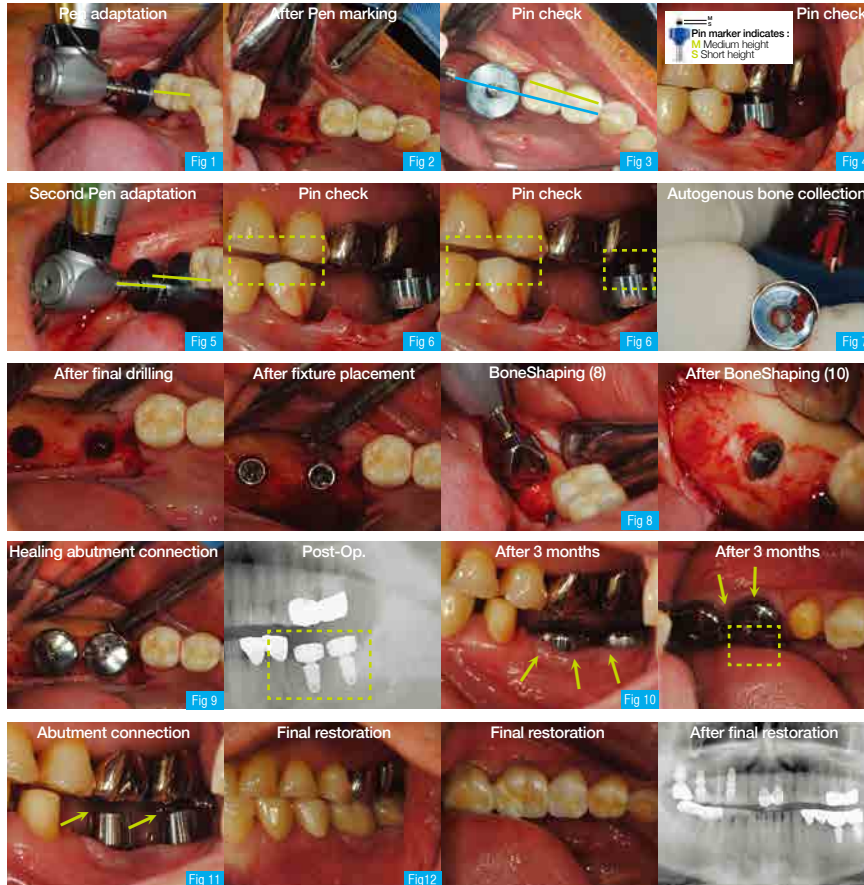


Fig 1. Mid-position bucco-lingually:
1. (Prosthetic) Imaginary adjacent line (green line)
2. (Bony) Mid-position of alveolar bone Compromise between 1 and 2.

Fig 2. D2.8mm + H8.0mm hole

Fig 3. This case, I choose bony-mid-position rather than prosthetic mid-position.

Fig 5. Approach the Pen to the first Pin. Be careful with drill path. (green line)

Fig 6. Pin marker indicates buccal cross-bite.

To ease cross-bite, I choose to lean the path lingually slightly, while keeping emerging position the same.

Vertical height check. Anterior open-bite (about 1.5mm) shows us insufficient prosthetic clearance. To use short height, we should place fixture 1.5mm deeper than crestal level.

Fig 7. (D2.8mm X H8.0mm hole) X 2 sites. Collected volume is about 0.1cc. This case, it's useless

Fig 8. Sequential BoneShaping, starting, with BoneShaper-8 (purple band)

Fig 9. Pen-10, Short height Pin = 10S

Fig 10. Watch buccal attached gingiva.

Fig 11. Direct abutment level impression. Watch interocclusal clearance.

Fig 12. Zirconia bridge on #36-37. Zirconia crowns on #34, 35.

Fig 13. Zirconia bridge on #36-37. Zirconia crowns on #34, 35.

Meg-Align System

