

R2GATE[®] : MegaGen Digital Solution

by MEGA'GEN

Turning imagination
into reality
since 2012





MegaGen Digital Solution

004 MegaGen DIGITAL Work Flow

006 Digital Equipment

006 I. Intra-Oral Scanner

008 II. Model Scanner

010 III. Auto - CAM Lab Solution

010 1. MEG-PRINTER II

011 2. Ti - CAM PRO

012 3. WHITE-CAM PRO

013 4. WHITE-CAM WET

014 Digital Material

014 1. ZrGEN

014 2. TiGEN

MEGAGEN DIGITAL WORK FLOW



MegaGen Provides CAD/less Solution!

Just send a scan data. MegaGen R2 Digital Center will take care of the design. The designed file will be sent to you within an hour.

• Digital Equipment



R2 STUDIO



Intra-Oral Scanner

3D Imaging



NEXT Unit chair



Transformer

• Materials



R2TRAY



SCAN Abutment

• Consumer value

Tx.planning & Design



R2GATE

In-lab Equipments



Meg Printer II



Ti CAM - PRO



WHITE CAM - PRO



Surgical KIT



R2 Package



Resin



TIGEN



ZrGEN



Blocks



R2GATE Guide surgery & One-Day Implant



R2GATE Guide



Provisional



Ti. CUSTUM



Zr. CUSTUM



Prosthesis

Digital Equipment

I. Intra-Oral Scanner

Carestream CS 3600
DENTAL

(Ref.C : CAREDENT-CS3500)

Technical Specifications

Sensor technology	1/2 inch CMOS
Illumination	LED, Amber, Blue, Green
Field of view	13x13mm
Depth of field	-2 to +12mm
Anti-fogging technology	Actively heated tip, guaranteed non-fogging operation when used intraorally
Cable length	2.7m (1.8m+0.9m)
Digital Connection	USB 2.0 High Speed
Dimensions without cable	220x38x58mm for normal and side tips
Weight	325g (excluding power box)
Handpiece	Input 12V 2A
Power Box	75x21x21mm 12V 2A 12V 2A
Weight	100-240V-50/60Hz, 600mA 12V 2A

Faster, Smarter!

Choosing an appropriate intra-oral scanner begins the pragmatic digital treatment



- Reasonable price
- No annual fee
- Various compatibility with open STL
- Continuous scanning function **NEW**
- Smart matching system **NEW**
- Time-machine function **NEW**
- Full HD 3D color
- Easy to operate, high precision
- Side Tip is provided **NEW**

Evolutionary scanning technology, Smart Matching System

- Continuous scanning
- Smart matching system
- Time machine function



Smart matching system



Time machine function

- CS3600 scanner is a high-speed image streaming type oral scanner. It provides faster scanning speed than the any other competitive scanners.
- It provides stitching function (quickly pasting omitted scan information), and merging function (finding the point even if you change the buccolingual scanning region).
- We provide time machine function that allows to re-scan from the specific point to minimize unnecessary scanning.

Full HD 3D color

We provide improved quality scan image with clearer color and effect



Provide various solutions that are based on the complete open STL files

R2GATE Guide / Model

It is possible to fabricate a surgical guide and dental model for prosthetic/orthodontic system by linking the program with Meg-Printer



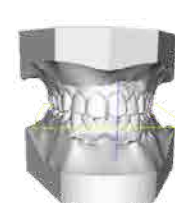
Crown/In-Lay/On-Lay/Veneer/Customized Abutment

Various prosthetics, temporary shell/crown, and etc., can be fabricated by linking the system with White-CAM/ Ti-CAM



3D Ortho

3D set up model can be used as a counseling material for transparent orthodontic system.



2 Types of tips

- Regular tip and side tip easily scan buccolingual region.
- You can simply autoclave more than 20 times



Side Tip

Regular Tip

II. Model Scanner

TRANSFORMER[®] HD / TRANSFORMER[®] UHD

Begin your digital scanning with Transformer,
the fast and precise Full HD 3D model scanner.

Equipment Specifications (TRANSFORMER HD/TRANSFORMER UHD)

Axis	2 Axis
Light Source	White Light LED/ STRUCTURED
Camera	2.0 MP (Twin Cameras) / 2.0 MP
Output	stl, obj
Accruacy	10 μ m
Spec	W330 x D430 x H495 mm Weight : 15kg

- More powerful than ever.
- 2.0MP HD cameras & USB 3.0 interface
- More precise and faster scan in a min.
- Big scan chamber for articulator
- R2GATE SCAN protocol installed.



IMPLANT SCAN



IMPRESSION SCAN



ALL IN ONE SCAN

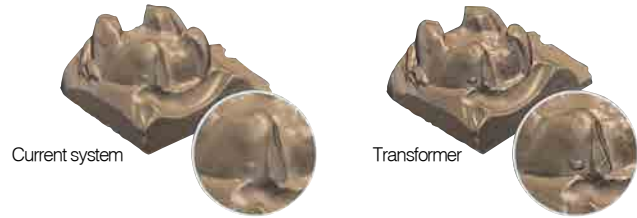


ORTHODONTIC SCAN



Clearer margin line, 3D imaging taking

Now, you can get much clearer and precise scan data from our 2.0 Megapixel Camera.

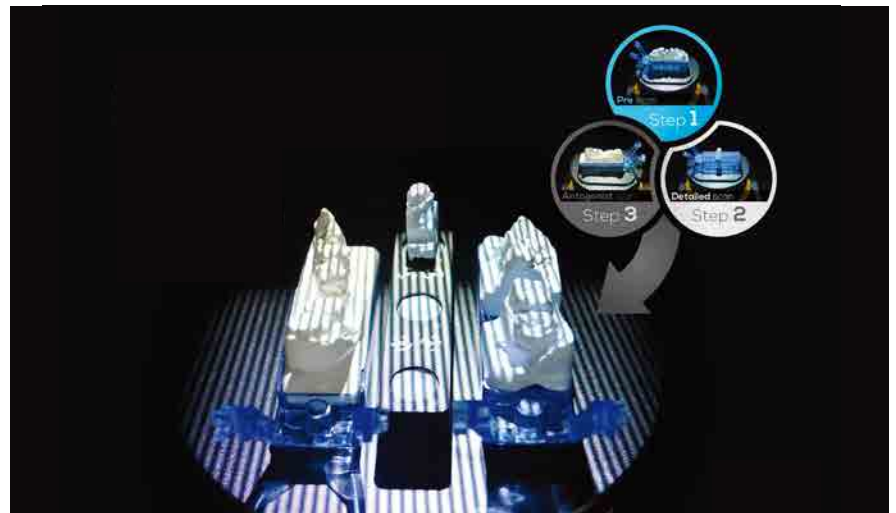


Big Time Saver

Shorter scanning period with support of USB 3.0



3 steps into 1! All-in-one Scan



Transformer has a large scanning place

You can put an articulator with a model (Artex, KaVo, SAM) into the machine and scan them together

Because the machine scans a model with a camera moving system without fixed zig, there is no need to set up a zig every time you scan.



III. Auto - CAM Lab Solution

1. MEG-PRINTER II

MEG-PRINTER II SPECIFICATIONS

Printing Method	DLP (Digital Light Processing)
Build Size	100 x 60 x 70mm
Build thickness	25 μ m ~ 100 μ m
Light Lamp	LED
Printing Materials	Light Curing Resin
Spec	W310 x D210 x H350mm Weight : 10kg



Pragmatical 3D-Printer for Clinic

- Simple procedures.
- Fast modeling time.
- Accurate result.
- Cost-effective & User friendly.
- Build time (25min)



Variety types of indications



- Magnetic Printing Head
- Cartridge change type

III. Auto - CAM Lab Solution

2. Ti-CAM PRO

TI-CAM PRO SPECIFICATIONS

Axis/ Speed	4 Aixs / S-servo 42,500 RPM
Materials	Titanium Preformed abutment
Tooling	1.5 / 2.5mm
Operation	Built-in PC
Milling time	25 min / 45min
Spec	W600 x D600 x H840mm/ 145Kg



Born to Customized Abutment

- Simple but powerful function.
- Born to Ti-customized abutment.
- Strong & precise milling ability.
- Faster milling time (25min).



- Dual Jig Holder
- Auto support cutting
- 3 Pre-milled abutment loading



TIGEN Abutment

III. Auto - CAM Lab Solution

3. WHITE-CAM PRO

WHITE-CAM PRO SPECIFICATIONS

Axis	5 Aixe
Spindle	500W, 42,500 RPM
Tooling	0.6 / 1.0 / 2.0, 7ea Auto change
Operation	Built-in PC
Milling time	25 min for single crown
Spec	W600 x D600 x H840 mm Weight : 145kg/ Dry milling



Precise 5 Axis Milling Machine

- High-End 5 axis milling machine.
- All Dry milling materials.
: PMMA, Zirconia, Wax, Ultimate
- Full arch restoration
- Denture
- Customized abutment



PMMA BLOCK



ZIRCONIA



Wax Block

III. Auto - CAM Lab Solution

4. WHITE-CAM WET

WHITE-CAM WET SPECIFICATIONS

Axis/ Speed	4 Aixs / sycotec 80,000 RPM
Materials	PMMA, Wax, Glass ceramic, Hybrid ceramic
Tooling	0.6 / 1.0 / 2.0, 8ea Auto change
Operation	Built-in PC
Milling time	25 min for single crown
Spec	W400 x D400 x H520 mm Weight : 40kg/ Wet milling



Pragmatical 4 Axis Milling Machine

- Simple but powerful function.
- All White milling materials.
; PMMA, Wax, Hybrid Ceramic, Glass Ceramic
- Ø0.6, Ø1.0, Ø2.0mm drill
- Faster milling time (25min/ single)



PMMA BLOCK



Wax Block



Glass Ceramic



Composite Resin

Digital Material

I. ZrGEN®

ZrGEN® is the brand name of MegaGen Titanium Base. ZrGEN provides an aesthetic outcome and simplified dental implant prosthesis. A ZrGEN® crown and monolithic crown connected to a ZrGEN® Abutment provide strong and precise connection with the implant fixture.

Variety of ZrGEN®

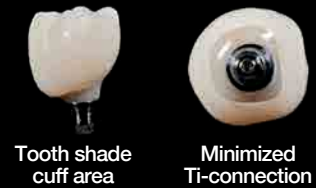


ZrGEN® Sub Structure



ZrGEN®

The strength of ZrGEN® frees you from the chipping of conventional PFM prosthesis. Monolithic zirconia crowns have no metal substructure, ensuring more aesthetic results. ZrGEN® crown and bridge are a superior substitutes for all conventional dental materials.



Clinical Application



II. TiGEN®

TiGEN® is the brand name of MegaGen Titanium customized abutment. It promises outstanding durability and simplified dental implant prosthesis. Ready-made connection part provides a strong and precise connection with the implant fixture.

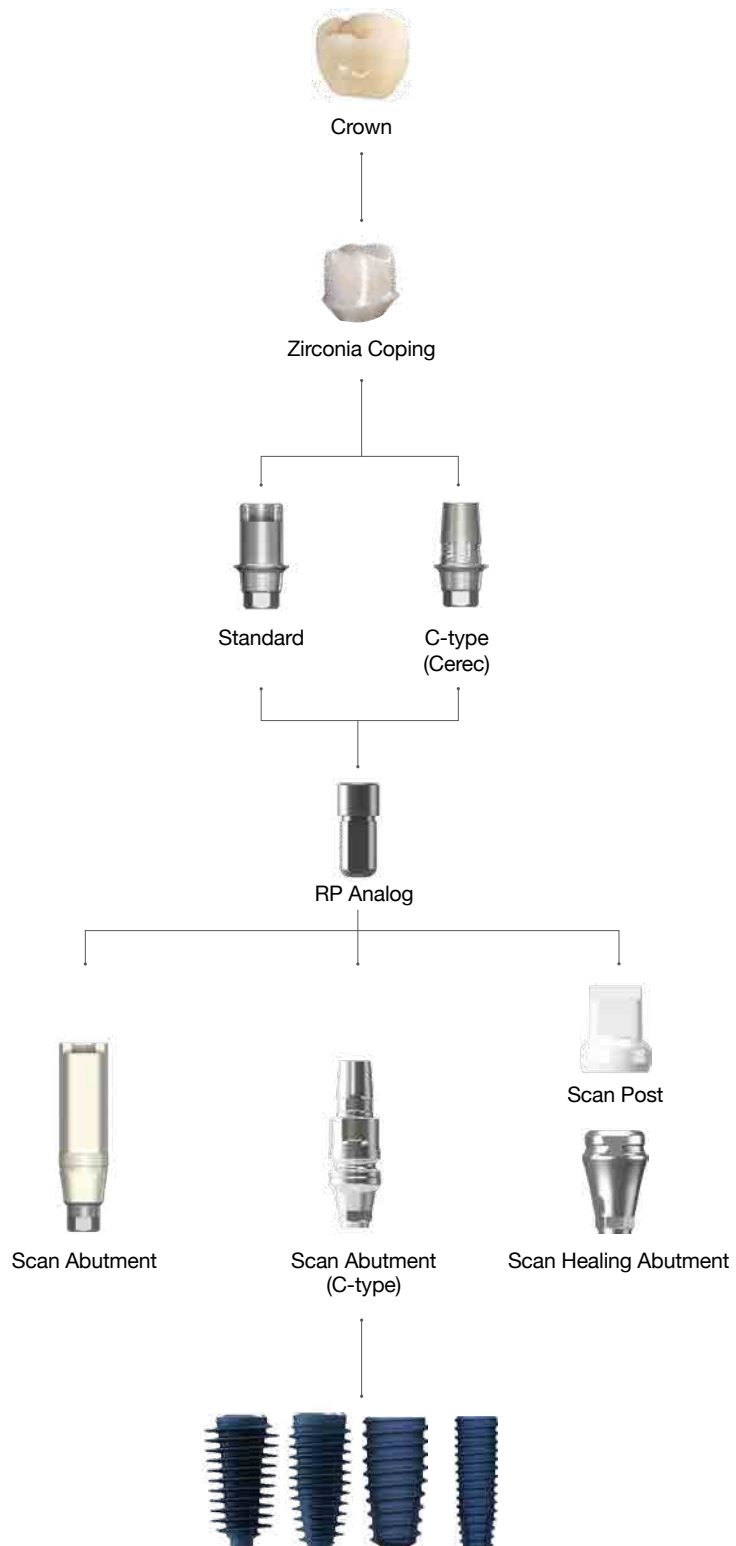


➔ ZrGEN® Prosthesis



ZrGEN® Abutment

ZrGEN® Abutment provides a strong and precise connection with the implant fixture. With Zirconia® coping, crown margins can be placed supragingivally since zirconia material matches with the color of natural teeth. Residual cement problems are no longer an issue.



➔ Scan Abutment Option

Scan Abutment

- Abutment Screw included.
- . AnyRidge (AANMSF)
- . AnyRidge Octa 1 (AROAS16B/ AROAS16)
- . AnyOne Internal (AS20)
- . AnyOne Exeternal (SCS160/ RCS200)
- . AnyOne OneStage (EXIMS100)
- . MiNi (MIAS14)
- . ST (OSGSAS3110/ OSGSAS3210)
- . Octa Level (IRCS200)
- . Multi-unit Abutment (MUAS)

- For Chairside/ Labside
- Included spare Abutment Screw
- Surpporing Dental CAD
 - 3 Shape
 - Exocad
 - Dental Wings

System	Profile Diameter	Length (mm)	Type	Ref.C
AnyRidge	Ø4.0	9	-	AANISR4009T
		13	-	AANISR4013T
AnyRidge Octa 1	Ø4.0	13	NC	AROSANT
			RC	AROSART
AnyOne Internal	Ø4.0	9	-	AAOISR4009T
		13	-	AAOISR4013T
AnyOne External	Ø4.0	9	Small	AEXESS4009T
		13		AEXESS4013T
		9	Regular	AEXESR4009T
		13		AEXESR4013T
AnyOne OneStage	Ø4.0	13	Cuff 1.8	AEXISR4010T
MiNi	3.5	9	-	MISS3509T
		13	-	MISS3513T
ST	Ø4.0	9	Small	OSGSSC3110T
		13		OSGSSC3111T
		9	Regular	OSGSSC3210T
		13		OSGSSC3211T
Octa Level	Ø4.0	11	-	AOCESC4011T
MUA Level (N-Type)	Ø4.0	13	-	AMUASR4013T

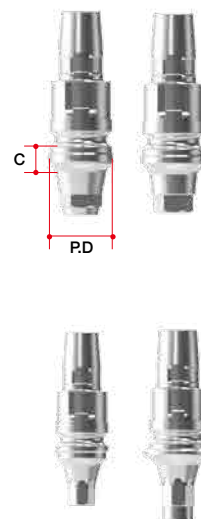


Scan Abutmet (C-type)

- Abutment Screw included.
- . AnyRidge (AANMSF)
- . AnyOne (AS20)
- . AnyRidge Octa 1(AROAS16B/ AROAS16)

- Scan Post for Sirona Cerec users → CEREC
- In in Lab CAD Software, compatible with
- Xive Library

System	Profile Diameter	Cuff Height	Post Size	Ref.C
AnyRidge	Ø3.9	0.5	Small	ARICSS3405T
		1		ARICSS3410T
		2		ARICSS3420T
	Ø4.3	0.5	Small	ARICSS3805T
		1		ARICSS3810T
		2		ARICSS3820T
	Ø5.5	0.5	Large	ARICSL4505T
		1		ARICSL4510T
		2		ARICSL4520T
AnyRidge Octa 1	Ø3.9	0.5	Small	AROCSS3405NT
		1		AROCSS3410NT
		2		AROCSS3420NT
	Ø4.3	0.5	Small	AROCSS3805NT
		1		AROCSS3810NT
		2		AROCSS3820NT
	Ø3.9	0.5	Small	AROCSS3405RT
		1		AROCSS3410RT
		2		AROCSS3420RT
	Ø4.3	0.5	Small	AROCSS3805RT
		1		AROCSS3810RT
		2		AROCSS3820RT
Ø5.5	0.5	Large	AROCSL4505RT	
	1		AROCSL4510RT	
	2		AROCSL4520RT	
AnyOne	Ø3.9	0.5	Small	AOICSS3405T
		1		AOICSS3410T
		2		AOICSS3420T
	Ø4.3	0.5	Small	AOICSS3805T
		1		AOICSS3810T
		2		AOICSS3820T
	Ø5.5	0.5	Large	AOICSL4505T
		1		AOICSL4510T
		2		AOICSL4520T



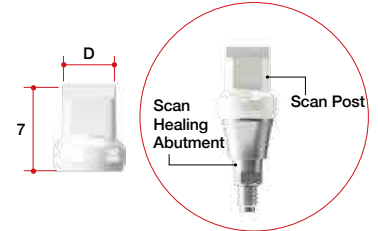
Scan Healing Abutment & Scan Post

- Abutment Screw included.
- AnyRidge (ARIHS1804/ARIHS1805/ARIHS1807)
- AnyOne (AOIHS2004/AOIHS2005/AOIHS2007)
- AnyRidge Octa 1 (AROHS1604/AROHS1605/AROHS1607)

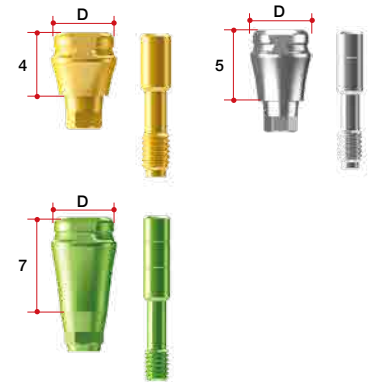
- Can get scan data without removing Scan Healing Abutment from Scan Post
- Different colors depend on the cuff size
- Scan healing abutment should be exposed 2.0mm on the surgical site for accurate scanning

- Scan Healing Abutment should be exposed 2.0mm from the surgical site for accurate scanning. Scanning would be much easier if you connect Scan Post when scanning seems difficult due to less exposure of Scan Healing Abutment or other conditions.
- Select Scan Post based on the diameter of Scan Healing Abutment
- Scan Post is a disposable product and sold separately in batch of 10EA. for each package

System	Profile Diameter	Scan Post	Height (mm)	Ref.C
AnyRidge	Ø4.0	SP4007.MTN	4	ARISH4004T
			5	ARISH4005T
			7	ARISH4007T
	Ø5.0	SP5007.MTN	4	ARISH5004T
			5	ARISH5005T
			7	ARISH5007T
	Ø6.0	SP6007.MTN	4	ARISH6004T
			5	ARISH6005T
			7	ARISH6007T
	Ø7.0	SP7007.MTN	4	ARISH7004T
			5	ARISH7005T
			7	ARISH7007T
	Ø5.0 (Extra type)	SP5007.MTN	4	ARNSH5004T
			5	ARNSH5005T
			7	ARNSH5007T
Ø6.0 (Extra type)	SP6007.MTN	4	ARNSH6004T	
		5	ARNSH6005T	
		7	ARNSH6007T	
AnyRidge Octa 1	Ø4.0	SP4007.MTN	4	AROISHN4004T
			5	AROISHN4005T
			7	AROISHN4007T
	Ø5.0	SP5007.MTN	4	AROISHN5004T
			5	AROISHN5005T
			7	AROISHN5007T
	Ø4.0	SP4007.MTN	4	AROISHR4004T
			5	AROISHR4005T
			7	AROISHR4007T
	Ø5.0	SP5007.MTN	4	AROISHR5004T
			5	AROISHR5005T
			7	AROISHR5007T
	Ø6.0	SP6007.MTN	4	AROISHR6004T
			5	AROISHR6005T
			7	AROISHR6007T
Ø7.0	SP7007.MTN	4	AROISHR7004T	
		5	AROISHR7005T	
		7	AROISHR7007T	
AnyOne	Ø4.0	SP4007.MTN	4	AOISH4004T
			5	AOISH4005T
			7	AOISH4007T
	Ø4.5	SP5007.MTN	4	AOISH4504T
			5	AOISH4505T
			7	AOISH4507T
	Ø5.5	SP6007.MTN	4	AOISH5504T
			5	AOISH5505T
			7	AOISH5507T
	Ø6.5	SP7007.MTN	4	AOISH6504T
			5	AOISH6505T
			7	AOISH6507T

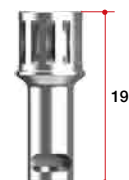


* If Scan Healing Abutment is exposed more than 2.5mm, it may destabilize a fixture and results in fixture failure.



Scan Post Carrier

System	Length	Ref.C
Common	19	SPC16



➔ RP Analog Option

RP Analog

- For Chairside/ Labside
- Included spare Abutment Screw
- Supporting Dental CAD
 - 3 Shape
 - Exocad

System	Profile Diameter	Length (mm)	Type	Ref.C
AnyRidge	Ø4.0	9	-	CANIAR4009
AnyRidge Octa 1	Ø3.3	10	NC	AROLAN
	Ø4.1		RC	AROLAR
AnyOne Internal	Ø4.0	9	Only Ø3.5	CAOIAS3509
			-	CAOJAR4009
AnyOne External	Ø3.5	9	Small	CEXEAS3509
	Ø4.1		Regular	CEXEAR4109
	Ø5.0		Wide	CEXEA5009
AnyOne OneStage	Ø4.8	9	Cuff 1.8	OSRA18
MiNi	Ø3.0	9	-	CMIAN3009
ST	Ø3.7	9	Small	OSRA3709
	Ø4.3		Regular	OSRA4309
Octa Level	Ø3.8	9	Small	OCTARA4
	Ø4.8		Regular	OCTARA5
	Ø5.8		Wide	OCTARA6
MUA Level (N-Type)	Ø4.8	9	-	MUALA

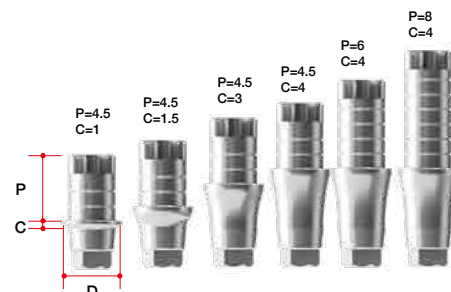


NEW!! ➔ ZrGEN Abutment Option

ZrGEN Abutment

- Abutment Screw included.
- . AnyRidge (AANMSF)
- . AnyOne Internal (AS20)
- . AnyOne Exeternal(SCS160/ RCS200)
- . AnyOne Stage (
- . MiNi (MIAZ1410)
- . ST(OSGSAS3110/OSGSAS3210)
- . Octa Level(IRCS200)
- . AnyRidge Octa 1(AROAS16B/ AROAS16)

- Titanium Base
- 1Set(=Abutment 10ea)
 - included spare Abutment Screw
 - MiNi ZrGEN has special ZrGEN Screw
- Supporting DentalCAD
 - 3 Shape
 - Exocad
 - Dental Wing
- Different groove number depend on the post size
 - P=4.5 ▶ groove number : 2ea
 - P=5 ▶ groove number : 3ea
 - P=6 ▶ groove number : 4ea
 - P=8 ▶ groove number : 6ea



Standard

System	Diameter	Cuff Height	Post Height	Type	Ref.C	
AnyRidge	Ø4.0	0.6	4.5	Hex	AANIPR4015.MTN	
			6		AANIPR4016.MTN	
			8		AANIPR4018.MTN	
		1.5	4.5		AANIPR4025.MTN	
			6		AANIPR4026.MTN	
			8		AANIPR4028.MTN	
		3.0	4.5		AANIPR4035.MTN	
			6		AANIPR4036.MTN	
			8		AANIPR4038.MTN	
		4.0	4.5		AANIPR4045.MTN	
			6		AANIPR4046.MTN	
			8		AANIPR4048.MTN	
		Non-Hex	0.6	4.5	AANIPR4015N.MTN	
				6	AANIPR4016N.MTN	
				8	AANIPR4018N.MTN	
			1.5	4.5	AANIPR4025N.MTN	
				6	AANIPR4026N.MTN	
				8	AANIPR4028N.MTN	
			3.0	4.5	AANIPR4035N.MTN	
				6	AANIPR4036N.MTN	
				8	AANIPR4038N.MTN	
			4.0	4.5	AANIPR4045N.MTN	
				6	AANIPR4046N.MTN	
				8	AANIPR4048N.MTN	
	Ø4.5	Hex	0.6	4.5	AANIPR4515.MTN	
				6	AANIPR4516.MTN	
				8	AANIPR4518.MTN	
			1.5	4.5	AANIPR4525.MTN	
				6	AANIPR4526.MTN	
				8	AANIPR4528.MTN	
			3.0	4.5	AANIPR4535.MTN	
				6	AANIPR4536.MTN	
				8	AANIPR4538.MTN	
			4.0	4.5	AANIPR4545.MTN	
				6	AANIPR4546.MTN	
				8	AANIPR4548.MTN	
		Non-Hex	0.6	4.5	AANIPR4515N.MTN	
				6	AANIPR4516N.MTN	
				8	AANIPR4518N.MTN	
			1.5	4.5	AANIPR4525N.MTN	
				6	AANIPR4526N.MTN	
				8	AANIPR4528N.MTN	
			3.0	4.5	AANIPR4535N.MTN	
				6	AANIPR4536N.MTN	
				8	AANIPR4538N.MTN	
			4.0	4.5	AANIPR4545N.MTN	
				6	AANIPR4546N.MTN	
				8	AANIPR4548N.MTN	
AnyRidge Octa 1	Ø4.0	NC	4.5	-	AROZGN4015.MTN	
					1.5	AROZGN4025.MTN
					3.0	AROZGN4035.MTN
			6.0		4.0	AROZGN4045.MTN
					0.6	AROZGN4016.MTN
					1.5	AROZGN4026.MTN
		RC	8.0		3.0	AROZGN4036.MTN
					4.0	AROZGN4046.MTN
					0.6	AROZGN4018.MTN
			4.0		1.5	AROZGN4028.MTN
					3.0	AROZGN4038.MTN
					4.0	AROZGN4048.MTN
MUA Level	Ø4.5	-	4.5	-	AROZGR4515.MTN	
					1.5	AROZGR4525.MTN
					3.0	AROZGR4535.MTN
			8.0		4.0	AROZGR4545.MTN
					0.6	AROZGR4516.MTN
					1.5	AROZGR4526.MTN
		N-Type (Nobel)	6.0		3.0	AROZGR4536.MTN
					4.0	AROZGR4546.MTN
					0.6	AROZGR4518.MTN
			8.0		1.5	AROZGR4528.MTN
					3.0	AROZGR4538.MTN
					4.0	AROZGR4548.MTN
MUA Level	Ø5.5	-	5	-	AMUAPR5515N.MTN	
					0.8	AMUAPR5516N.MTN
					8	AMUAPR5518N.MTN
			1.7		5	AMUAPR5525N.MTN
					6	AMUAPR5526N.MTN
					8	AMUAPR5528N.MTN
		N-Type (Nobel)	3.0		5	AMUAPR5535N.MTN
					6	AMUAPR5536N.MTN
					8	AMUAPR5538N.MTN
			4.0		5	AMUAPR5545N.MTN
					6	AMUAPR5546N.MTN
					8	AMUAPR5548N.MTN

Standard

System	Diameter	Cuff Height	Post Height	Type	Ref.C	
AnyOne Internal	Ø4.0	0.6	4.5	Hex	AAOIPR4015.MTN	
			6		AAOIPR4016.MTN	
			8		AAOIPR4018.MTN	
		1.5	4.5		AAOIPR4025.MTN	
			6		AAOIPR4026.MTN	
			8		AAOIPR4028.MTN	
		3.0	4.5		AAOIPR4035.MTN	
			6		AAOIPR4036.MTN	
			8		AAOIPR4038.MTN	
		4.0	4.5		AAOIPR4045.MTN	
			6		AAOIPR4046.MTN	
			8		AAOIPR4048.MTN	
		Ø4.5	0.6	4.5	Hex	AAOIPR4015N.MTN
				6		AAOIPR4016N.MTN
				8		AAOIPR4018N.MTN
			1.5	4.5		AAOIPR4025N.MTN
				6		AAOIPR4026N.MTN
				8		AAOIPR4028N.MTN
			3.0	4.5		AAOIPR4035N.MTN
				6		AAOIPR4036N.MTN
				8		AAOIPR4038N.MTN
			4.0	4.5		AAOIPR4045N.MTN
				6		AAOIPR4046N.MTN
				8		AAOIPR4048N.MTN
	Ø4.5		0.6	4.5	Hex	AAOIPR4515.MTN
				6		AAOIPR4516.MTN
				8		AAOIPR4518.MTN
			1.5	4.5		AAOIPR4525.MTN
				6		AAOIPR4526.MTN
				8		AAOIPR4528.MTN
			3.0	4.5		AAOIPR4535.MTN
				6		AAOIPR4536.MTN
				8		AAOIPR4538.MTN
			4.0	4.5		AAOIPR4545.MTN
				6		AAOIPR4546.MTN
				8		AAOIPR4548.MTN
		Ø4.5	0.6	4.5	Non-Hex	AAOIPR4515N.MTN
				6		AAOIPR4516N.MTN
				8		AAOIPR4518N.MTN
			1.5	4.5		AAOIPR4525N.MTN
				6		AAOIPR4526N.MTN
				8		AAOIPR4528N.MTN
			3.0	4.5		AAOIPR4535N.MTN
				6		AAOIPR4536N.MTN
				8		AAOIPR4538N.MTN
			4.0	4.5		AAOIPR4545N.MTN
				6		AAOIPR4546N.MTN
				8		AAOIPR4548N.MTN

System	Diameter	Cuff Height	Post Height	Type	Ref.C		
AnyOne External	Small	Ø4.2	0.6	Hex	AEXEPS4015.MTN		
					6	AEXEPS4016.MTN	
					8	AEXEPS4018.MTN	
			1.5		4.5	AEXEPS4025.MTN	
					6	AEXEPS4026.MTN	
					8	AEXEPS4028.MTN	
		3.0	4.5		AEXEPS4035.MTN		
			6		AEXEPS4036.MTN		
			8		AEXEPS4038.MTN		
		4.0	4.5		AEXEPS4045.MTN		
			6		AEXEPS4046.MTN		
			8		AEXEPS4048.MTN		
		Ø4.5	0.6		4.5	AEXEPS4515.MTN	
					6	AEXEPS4516.MTN	
					8	AEXEPS4518.MTN	
			1.5		4.5	AEXEPS4525.MTN	
					6	AEXEPS4526.MTN	
					8	AEXEPS4528.MTN	
		3.0	4.5	AEXEPS4535.MTN			
			6	AEXEPS4536.MTN			
			8	AEXEPS4538.MTN			
		Regular	Ø4.5	0.6	Hex	AEXEPR4515.MTN	
						6	AEXEPR4516.MTN
						8	AEXEPR4518.MTN
	1.5			4.5		AEXEPR4525.MTN	
				6		AEXEPR4526.MTN	
				8		AEXEPR4528.MTN	
	3.0		4.5	AEXEPR4535.MTN			
			6	AEXEPR4536.MTN			
			8	AEXEPR4538.MTN			
	Ø5.5		0.6	4.5		AEXEPW5515.MTN	
				6		AEXEPW5516.MTN	
				8		AEXEPW5518.MTN	
			1.5	4.5		AEXEPW5525.MTN	
				6		AEXEPW5526.MTN	
				8		AEXEPW5528.MTN	
	3.0		4.5	AEXEPW5535.MTN			
			6	AEXEPW5536.MTN			
			8	AEXEPW5538.MTN			
	4.0		4.5	AEXEPW5545.MTN			
			6	AEXEPW5546.MTN			
			8	AEXEPW5548.MTN			
	AnyOne OneStage		Cuff 1.8	Ø4.8	Octa	AEXIPR5015.MTN	
						6	AEXIPR5016.MTN
						8	AEXIPR5018.MTN
		1.5				4.5	AEXIPR5025.MTN
						6	AEXIPR5026.MTN
						8	AEXIPR5028.MTN
3.0		4.5		AEXIPR5035.MTN			
		6		AEXIPR5036.MTN			
		8		AEXIPR5038.MTN			
4.0		4.5		AEXIPR5045.MTN			
		6		AEXIPR5046.MTN			
		8		AEXIPR5048.MTN			

Standard

System	Diameter	Cuff Height	Post Height	Type	Ref.C	System	Diameter	Cuff Height	Post Height	Type	Ref.C
MiNi	Ø3.0	0.6	2.5	Hex	MIPN3013.MTN				5		AOCEPS5015.MTN
			2.5	Non-Hex	MIPN3013N.MTN				6		AOCEPS5016.MTN
Small	Ø4.0	0.6	4.5	Hex	OSGSPA3111.MTN	Small	Ø5.0	0.8	5	Octa	AOCEPS5018.MTN
			6		5				AOCEPS5025.MTN		
			8		6				AOCEPS5026.MTN		
			4.5		8				AOCEPS5028.MTN		
			6		5				AOCEPS5035.MTN		
			8		6				AOCEPS5036.MTN		
		1.5	4.5	Hex	OSGSPA3121.MTN			3.0	8	AOCEPS5038.MTN	
			6		5				AOCEPS5045.MTN		
			8		6				AOCEPS5046.MTN		
			4.5		8				AOCEPS5048.MTN		
			6		5				ANOEPS5015.MTN		
			8		6				ANOEPS5016.MTN		
		3.0	4.5	Hex	OSGSPA3131.MTN			4.0	8	ANOEPS5018.MTN	
			6		5				ANOEPS5025.MTN		
			8		6				ANOEPS5026.MTN		
			4.5		8				ANOEPS5028.MTN		
			6		5				ANOEPS5035.MTN		
			8		6				ANOEPS5036.MTN		
		4.0	4.5	Hex	OSGSPA3131.MTN			4.0	8	ANOEPS5038.MTN	
			6		5				ANOEPS5045.MTN		
			8		6				ANOEPS5046.MTN		
			4.5		8				ANOEPS5048.MTN		
			6		5				ANOEPS5015.MTN		
			8		6				ANOEPS5016.MTN		
ST	Ø4.0	0.6	4.5	Hex	OSGSPA3111N.MTN	ST	Ø4.0	0.8	5	Non-Octa	ANOEPS5018.MTN
			6		5				ANOEPS5025.MTN		
			8		6				ANOEPS5026.MTN		
			4.5		8				ANOEPS5028.MTN		
			6		5				ANOEPS5035.MTN		
			8		6				ANOEPS5036.MTN		
		1.5	4.5	Hex	OSGSPA3122N.MTN			3.0	8	ANOEPS5038.MTN	
			6		5				ANOEPS5045.MTN		
			8		6				ANOEPS5046.MTN		
			4.5		8				ANOEPS5048.MTN		
			6		5				AOCEPR5515.MTN		
			8		6				AOCEPR5516.MTN		
		3.0	4.5	Hex	OSGSPA3123N.MTN			4.0	8	AOCEPR5518.MTN	
			6		5				AOCEPR5525.MTN		
			8		6				AOCEPR5526.MTN		
			4.5		8				AOCEPR5528.MTN		
			6		5				AOCEPR5535.MTN		
			8		6				AOCEPR5536.MTN		
		4.0	4.5	Hex	OSGSPA3131N.MTN			4.0	8	AOCEPR5538.MTN	
			6		5				AOCEPR5545.MTN		
			8		6				AOCEPR5546.MTN		
			4.5		8				AOCEPR5548.MTN		
			6		5				ANOEPR5515.MTN		
			8		6				ANOEPR5516.MTN		
Regular	Ø4.5	0.6	4.5	Hex	OSGSPA3121N.MTN	Regular	Ø4.5	0.8	5	Octa	ANOEPR5518.MTN
			6		5				ANOEPR5525.MTN		
			8		6				ANOEPR5526.MTN		
			4.5		8				ANOEPR5528.MTN		
			6		5				ANOEPR5535.MTN		
			8		6				ANOEPR5536.MTN		
		1.5	4.5	Hex	OSGSPA3122N.MTN			3.0	8	ANOEPR5538.MTN	
			6		5				ANOEPR5545.MTN		
			8		6				ANOEPR5546.MTN		
			4.5		8				ANOEPR5548.MTN		
			6		5				AOCEPW6515.MTN		
			8		6				AOCEPW6516.MTN		
		3.0	4.5	Hex	OSGSPA3123N.MTN			4.0	8	AOCEPW6518.MTN	
			6		5				AOCEPW6525.MTN		
			8		6				AOCEPW6526.MTN		
			4.5		8				AOCEPW6528.MTN		
			6		5				AOCEPW6535.MTN		
			8		6				AOCEPW6536.MTN		
		4.0	4.5	Hex	OSGSPA3131N.MTN			4.0	8	AOCEPW6538.MTN	
			6		5				AOCEPW6545.MTN		
			8		6				AOCEPW6546.MTN		
			4.5		8				AOCEPW6548.MTN		
			6		5				ANOEPW6515.MTN		
			8		6				ANOEPW6516.MTN		
Wide	Ø6.5	0.6	4.5	Hex	OSGSPA4018.MTN	Wide	Ø6.5	0.8	5	Octa	ANOEPW6518.MTN
			6		5				ANOEPW6525.MTN		
			8		6				ANOEPW6526.MTN		
			4.5		8				ANOEPW6528.MTN		
			6		5				ANOEPW6535.MTN		
			8		6				ANOEPW6536.MTN		
		1.5	4.5	Hex	OSGSPA4025.MTN			3.0	8	ANOEPW6538.MTN	
			6		5				ANOEPW6545.MTN		
			8		6				ANOEPW6546.MTN		
			4.5		8				ANOEPW6548.MTN		
			6		5				ANOEPW6515.MTN		
			8		6				ANOEPW6516.MTN		
		3.0	4.5	Hex	OSGSPA4026.MTN			4.0	8	ANOEPW6518.MTN	
			6		5				ANOEPW6525.MTN		
			8		6				ANOEPW6526.MTN		
			4.5		8				ANOEPW6528.MTN		
			6		5				ANOEPW6535.MTN		
			8		6				ANOEPW6536.MTN		
		4.0	4.5	Hex	OSGSPA4028.MTN			4.0	8	ANOEPW6538.MTN	
			6		5				ANOEPW6545.MTN		
			8		6				ANOEPW6546.MTN		
			4.5		8				ANOEPW6548.MTN		
			6		5				ANOEPW6515.MTN		
			8		6				ANOEPW6516.MTN		
ST	Ø4.0	0.6	4.5	Hex	OSGSPA4035.MTN	ST	Ø4.0	0.8	5	Non-Octa	ANOEPW6518.MTN
			6		5				ANOEPW6525.MTN		
			8		6				ANOEPW6526.MTN		
			4.5		8				ANOEPW6528.MTN		
			6		5				ANOEPW6535.MTN		
			8		6				ANOEPW6536.MTN		
		1.5	4.5	Hex	OSGSPA4036.MTN			3.0	8	ANOEPW6538.MTN	
			6		5				ANOEPW6545.MTN		
			8		6				ANOEPW6546.MTN		
			4.5		8				ANOEPW6548.MTN		
			6		5				ANOEPW6515.MTN		
			8		6				ANOEPW6516.MTN		
		3.0	4.5	Hex	OSGSPA4038.MTN			4.0	8	ANOEPW6518.MTN	
			6		5				ANOEPW6525.MTN		
			8		6				ANOEPW6526.MTN		
			4.5		8				ANOEPW6528.MTN		
			6		5				ANOEPW6535.MTN		
			8		6				ANOEPW6536.MTN		
		4.0	4.5	Hex	OSGSPA4045.MTN			4.0	8	ANOEPW6538.MTN	
			6		5				ANOEPW6545.MTN		
			8		6				ANOEPW6546.MTN		
			4.5		8				ANOEPW6548.MTN		
			6		5				ANOEPW6515.MTN		
			8		6				ANOEPW6516.MTN		
Regular	Ø4.5	0.6	4.5	Hex	OSGSPA4046.MTN	Regular	Ø4.5	0.8	5	Octa	ANOEPW6518.MTN
			6		5				ANOEPW6525.MTN		
			8		6				ANOEPW6526.MTN		
			4.5		8				ANOEPW6528.MTN		
			6		5				ANOEPW6535.MTN		
			8		6				ANOEPW6536.MTN		
		1.5	4.5	Hex	OSGSPA4048.MTN			3.0	8	ANOEPW6538.MTN	
			6		5				ANOEPW6545.MTN		
			8		6				ANOEPW6546.MTN		
			4.5		8				ANOEPW6548.MTN		
			6		5				ANOEPW6515.MTN		
			8		6				ANOEPW6516.MTN		
		3.0	4.5	Hex	OSGSPA4048.MTN			4.0	8	ANOEPW6518.MTN	
			6		5				ANOEPW6525.MTN		
			8		6				ANOEPW6526.MTN		
			4.5		8				ANOEPW6528.MTN		
			6		5				ANOEPW6535.MTN		
			8		6				ANOEPW6536.MTN		
		4.0	4.5	Hex	OSGSPA4048.MTN			4.0	8	ANOEPW6538.MTN	
			6		5				ANOEPW6545.MTN		
			8		6				ANOEPW6546.MTN		
			4.5		8				ANOEPW6548.MTN		
			6		5				ANOEPW6515.MTN		
			8		6				ANOEPW6516.MTN		



Extra

System	Fixture Core	Diameter	Cuff Height	Post Height	Type	Ref.C
AnyRidge	Core 3.3	Ø4.5	0.6	4.5	Hex	ARZXM4515.MTN
				6		ARZXM4516.MTN
				8		ARZXM4518.MTN
			1.5	4.5		ARZXM4525.MTN
				6		ARZXM4526.MTN
				8		ARZXM4528.MTN
			3.0	4.5		ARZXM4535.MTN
				6		ARZXM4536.MTN
				8		ARZXM4538.MTN
			4.0	4.5		ARZXM4545.MTN
				6		ARZXM4546.MTN
				8		ARZXM4548.MTN
	Core 3.8	Ø5.0	0.6	4.5	Hex	ARZXM503815.MTN
				6		ARZXM503816.MTN
				8		ARZXM503818.MTN
			1.5	4.5		ARZXM503825.MTN
				6		ARZXM503826.MTN
				8		ARZXM503828.MTN
			3.0	4.5		ARZXM503835.MTN
				6		ARZXM503836.MTN
				8		ARZXM503838.MTN
			4.0	4.5		ARZXM503845.MTN
				6		ARZXM503846.MTN
				8		ARZXM503848.MTN
Core 3.8	Ø5.5	0.6	4.5	Hex	ARZXM553815.MTN	
			6		ARZXM553816.MTN	
			8		ARZXM553818.MTN	
		1.5	4.5		ARZXM553825.MTN	
			6		ARZXM553826.MTN	
			8		ARZXM553828.MTN	
		3.0	4.5		ARZXM553835.MTN	
			6		ARZXM553836.MTN	
			8		ARZXM553838.MTN	
		4.0	4.5		ARZXM553845.MTN	
			6		ARZXM553846.MTN	
			8		ARZXM553848.MTN	
Core 3.8	Ø5.5	0.6	4.5	Non -Hex	ARZXM553815N.MTN	
			6		ARZXM553816N.MTN	
			8		ARZXM553818N.MTN	
		1.5	4.5		ARZXM553825N.MTN	
			6		ARZXM553826N.MTN	
			8		ARZXM553828N.MTN	
		3.0	4.5		ARZXM553835N.MTN	
			6		ARZXM553836N.MTN	
			8		ARZXM553838N.MTN	
		4.0	4.5		ARZXM553845N.MTN	
			6		ARZXM553846N.MTN	
			8		ARZXM553848N.MTN	

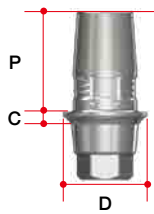
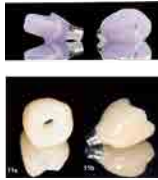
Extra

System	Fixture Core	Diameter	Cuff Height	Post Height	Type	Ref.C	
AnyRidge	Core4.0	Ø5.0	0.6	4.5	Hex	ARZXM5015.MTN	
				6		ARZXM5016.MTN	
				8		ARZXM5018.MTN	
			1.5	4.5		ARZXM5025.MTN	
				6		ARZXM5026.MTN	
				8		ARZXM5028.MTN	
			3.0	4.5		ARZXM5035.MTN	
				6		ARZXM5036.MTN	
				8		ARZXM5038.MTN	
			4.0	4.5	ARZXM5045.MTN		
				6	ARZXM5046.MTN		
				8	ARZXM5048.MTN		
			0.6	4.5	Non -Hex	ARZXM5015N.MTN	
						6	ARZXM5016N.MTN
						8	ARZXM5018N.MTN
				1.5		4.5	ARZXM5025N.MTN
						6	ARZXM5026N.MTN
						8	ARZXM5028N.MTN
				3.0		4.5	ARZXM5035N.MTN
						6	ARZXM5036N.MTN
						8	ARZXM5038N.MTN
			4.0	4.5	ARZXM5045N.MTN		
				6	ARZXM5046N.MTN		
				8	ARZXM5048N.MTN		
		Ø5.5	0.6	Hex	4.5	ARZXM5515.MTN	
					6	ARZXM5516.MTN	
					8	ARZXM5518.MTN	
					1.5	4.5	ARZXM5525.MTN
						6	ARZXM5526.MTN
						8	ARZXM5528.MTN
					3.0	4.5	ARZXM5535.MTN
						6	ARZXM5536.MTN
						8	ARZXM5538.MTN
			4.0	4.5	ARZXM5545.MTN		
				6	ARZXM5546.MTN		
				8	ARZXM5548.MTN		
			0.6	4.5	Non -Hex	ARZXM5515N.MTN	
						6	ARZXM5516N.MTN
						8	ARZXM5518N.MTN
				1.5		4.5	ARZXM5525N.MTN
						6	ARZXM5526N.MTN
						8	ARZXM5528N.MTN
				3.0		4.5	ARZXM5535N.MTN
						6	ARZXM5536N.MTN
						8	ARZXM5538N.MTN
			4.0	4.5	ARZXM5545N.MTN		
				6	ARZXM5546N.MTN		
				8	ARZXM5548N.MTN		

System	Fixture Core	Diameter	Cuff Height	Post Height	Type	Ref.C	
AnyRidge	Core 4.8	Ø5.5	0.6	4.5	Hex	ARZXL5515.MTN	
				6		ARZXL5516.MTN	
				8		ARZXL5518.MTN	
			1.5	4.5		ARZXL5525.MTN	
				6		ARZXL5526.MTN	
				8		ARZXL5528.MTN	
			3.0	4.5		ARZXL5535.MTN	
				6		ARZXL5536.MTN	
				8		ARZXL5538.MTN	
			4.0	4.5	ARZXL5545.MTN		
				6	ARZXL5546.MTN		
				8	ARZXL5548.MTN		
			0.6	4.5	Non -Hex	ARZXL5515N.MTN	
						6	ARZXL5516N.MTN
						8	ARZXL5518N.MTN
				1.5		4.5	ARZXL5525N.MTN
						6	ARZXL5526N.MTN
						8	ARZXL5528N.MTN
				3.0		4.5	ARZXL5535N.MTN
						6	ARZXL5536N.MTN
						8	ARZXL5538N.MTN
			4.0	4.5	ARZXL5545N.MTN		
				6	ARZXL5546N.MTN		
				8	ARZXL5548N.MTN		
		Ø6.0	0.6	Hex	4.5	ARZXL6015.MTN	
					6	ARZXL6016.MTN	
					8	ARZXL6018.MTN	
					1.5	4.5	ARZXL6025.MTN
						6	ARZXL6026.MTN
						8	ARZXL6028.MTN
					3.0	4.5	ARZXL6035.MTN
						6	ARZXL6036.MTN
						8	ARZXL6038.MTN
			4.0	4.5	ARZXL6045.MTN		
				6	ARZXL6046.MTN		
				8	ARZXL6048.MTN		
			0.6	4.5	Non -Hex	ARZXL6015N.MTN	
						6	ARZXL6016N.MTN
						8	ARZXL6018N.MTN
				1.5		4.5	ARZXL6025N.MTN
						6	ARZXL6026N.MTN
						8	ARZXL6028N.MTN
				3.0		4.5	ARZXL6035N.MTN
						6	ARZXL6036N.MTN
						8	ARZXL6038N.MTN
			4.0	4.5	ARZXL6045N.MTN		
				6	ARZXL6046N.MTN		
				8	ARZXL6048N.MTN		

- ZrGEN Abutment

- Ti-base for Sirona Cerec users → CEREC
- In in Lab CAD Software, compatible with Xive Library



C-Type

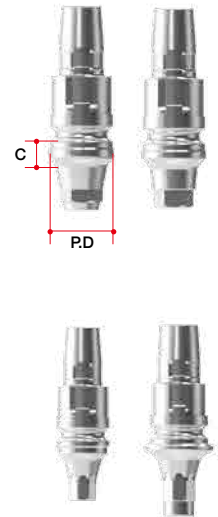
System	Diameter	Cuff Height	Post Height	Post Size	Ref.C		
AnyRidge	Ø3.9	0.5	4.7	Small	ARCS3405.MTN		
		1			ARCS3410.MTN		
		2			ARCS3420.MTN		
	Ø4.3	0.5			ARCS3805.MTN		
		1			ARCS3810.MTN		
		2			ARCS3820.MTN		
	Ø5.5	0.5		Large	ARCL4505.MTN		
		1			ARCL4510.MTN		
		2			ARCL4520.MTN		
AnyRidge Octa 1	Ø3.9	0.5	4.5	Small	AROCSN3405.MTN		
		1.0			AROCSN3410.MTN		
		2.0			AROCSN3420.MTN		
		Ø4.3			0.5	AROCSN3805.MTN	
					1.0	AROCSN3810.MTN	
					2.0	AROCSN3820.MTN	
	Ø3.9	0.5		Small	AROCSR3405.MTN		
		1.0			AROCSR3410.MTN		
		2.0			AROCSR3420.MTN		
		Ø4.3			0.5	AROCSR3805.MTN	
					1.0	AROCSR3810.MTN	
					2.0	AROCSR3820.MTN	
	Ø5.5	0.5		Large	AROCLR4505.MTN		
		1.0			AROCLR4510.MTN		
		2.0			AROCLR4520.MTN		
	AnyOne	Ø3.9		0.5	4.7	Small	AOCS3405.MTN
				1			AOCS3410.MTN
				2			AOCS3420.MTN
Ø4.3		0.5	AOCS3805.MTN				
		1	AOCS3810.MTN				
		2	AOCS3820.MTN				
Ø5.5		0.5	Large	AOCL4505.MTN			
		1		AOCL4510.MTN			
		2		AOCL4520.MTN			
ST	Ø3.9	0.5	4.7	Small	STCSS3405.MTN		
		1			STCSS3410.MTN		
		2			STCSS3420.MTN		
		Ø4.3			0.5	STCSS3805.MTN	
					1	STCSS3810.MTN	
					2	STCSS3820.MTN	
	Ø3.9	0.5		Small	STCSR3405.MTN		
		1			STCSR3410.MTN		
		2			STCSR3420.MTN		
		Ø4.3			0.5	STCSR3805.MTN	
					1	STCSR3810.MTN	
					2	STCSR3820.MTN	
	Ø5.5	0.5		Large	STCLR4505.MTN		
		1			STCLR4510.MTN		
		2			STCLR4520.MTN		

Scan Abutmet (C-type)

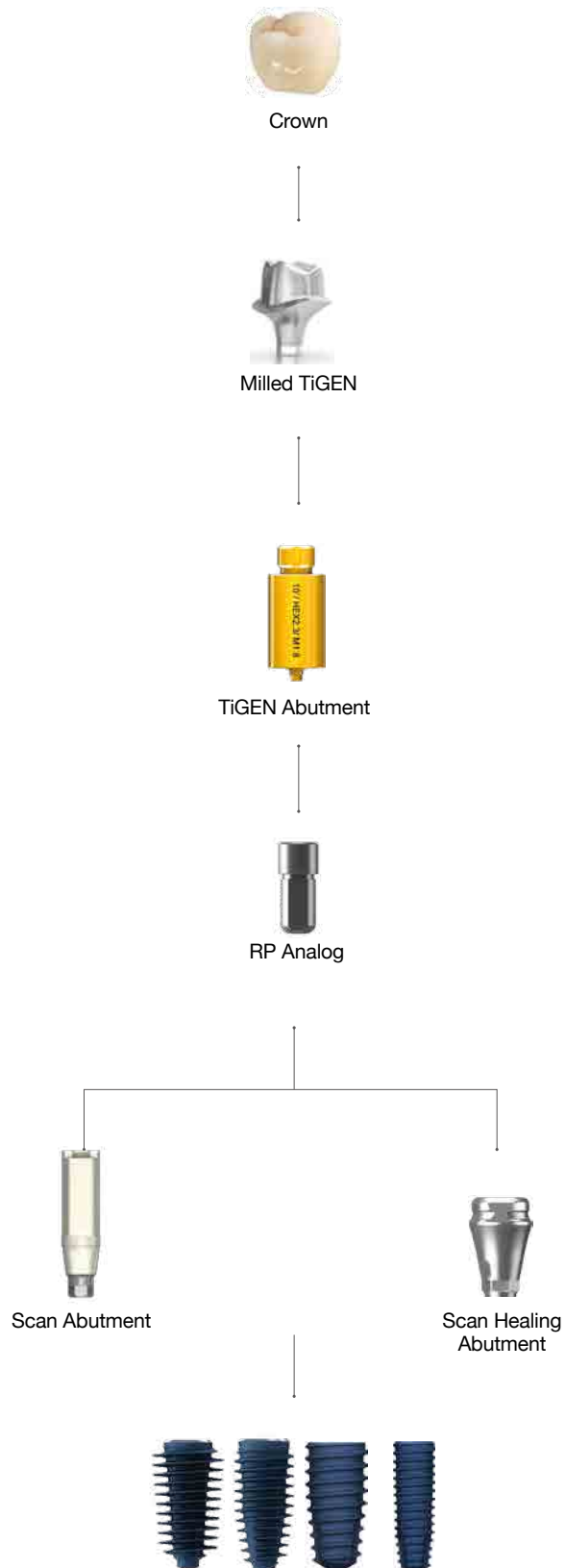
- Abutment Screw included.
- . AnyRidge (AANMSF)
- . AnyOne (AS20)
- . AnyRidge Octa 1 (AROAS16B/ AROAS16)

- Scan Post for Sirona Cerec users → CEREC
- In in Lab CAD Software, compatible with
- Xive Library

System	Profile Diameter	Cuff Height	Post Size	Ref.C		
AnyRidge	Ø3.9	0.5	Small	ARICSS3405T		
		1		ARICSS3410T		
		2		ARICSS3420T		
	Ø4.3	0.5		ARICSS3805T		
		1		ARICSS3810T		
		2		ARICSS3820T		
	Ø5.5	0.5		Large	ARICSL4505T	
		1			ARICSL4510T	
		2			ARICSL4520T	
AnyRidge Octa 1	Ø3.9	0.5	Small	AROCSS3405NT		
		1		AROCSS3410NT		
		2		AROCSS3420NT		
	Ø4.3	0.5		AROCSS3805NT		
		1		AROCSS3810NT		
		2		AROCSS3820NT		
	Ø3.9	0.5		Small	AROCSS3405RT	
		1			AROCSS3410RT	
		2			AROCSS3420RT	
		Ø4.3			0.5	AROCSS3805RT
					1	AROCSS3810RT
					2	AROCSS3820RT
	Ø5.5	0.5		Large	AROCSL4505RT	
		1			AROCSL4510RT	
		2			AROCSL4520RT	
AnyOne	Ø3.9	0.5	Small	AOICSS3405T		
		1		AOICSS3410T		
		2		AOICSS3420T		
	Ø4.3	0.5		AOICSS3805T		
		1		AOICSS3810T		
		2		AOICSS3820T		
	Ø5.5	0.5		Large	AOICSL4505T	
		1			AOICSL4510T	
		2			AOICSL4520T	



➡ TiGEN Prosthesis



➔ TiGEN Abutment Option

TiGEN Abutment

- Abutment Screw included.
- . AnyRidge (AANMSF)
- . AnyOne Internal (AS20)
- . AnyOne External(SCS160/ RCS200)
- . AnyOne Stage (
- . MiNi (MIAZ1410)
- . ST(OSGSAS3110/OSGSAS3210)
- . Octa Level(I RCS200)
- . AnyRidge Octa 1(AROAS16B/ AROAS16)

- Pre-milled Abutment
- 1Set(=Abutment 10ea)
- included spare Abutment Screw
- Supporting DentalCAD
- 3Shape
- Exocad
- Dental Wings

Standard

System	Color	Diameter	Length	Type	Ref.C
AnyRidge	Gold	Ø10	20	Hex	ARTR1020.MTN
				Non-Hex	ARTR1020N.MTN
		Ø12		Hex	ARTR1220.MTN
				Non-Hex	ARTR1220N.MTN
AnyRidge Octa 1	NC Gold	Ø10	20	Hex	AROTGN1020.MTN
		Ø12		Hex	AROTGN1220.MTN
	RC Silver	Ø10		Hex	AROTGR1020.MTN
		Ø12		Hex	AROTGR1220.MTN
AnyOne Internal	Pink	Ø10	20	Hex	AOTR1020.MTN
				Non-Hex	AOTR1020N.MTN
		Ø12		Hex	AOTR1220.MTN
				Non-Hex	AOTR1220N.MTN
AnyOne External	N/A	Ø12	20	Hex	AETS1220.MTN
				Hex	AETR1220.MTN
				Hex	AETW1220.MTN
MiNi	N/A	Ø10	20	Hex	MITN1020.MTN
				Non-Hex	MITN1020N.MTN
ST	Small	Ø10	20	Hex	OSTG3112.MTN
				Non-Hex	OSTG3112N.MTN
		Ø12		Hex	OSTG3111.MTN
				Non-Hex	OSTG3111N.MTN
	Regular	Ø10		Hex	OSTG3212.MTN
				Non-Hex	OSTG3212N.MTN
		Ø12		Hex	OSTG3211.MTN
				Non-Hex	OSTG3211N.MTN
Octa Level	Small	Ø10	20	Octa	OCTS1020.MTN
				Non-Octa	NOTS1020.MTN
		Ø12		Octa	OCTS1220.MTN
				Non-Octa	NOTS1220.MTN
	Regular	Ø10		Octa	OCTR1020.MTN
				Non-Octa	NOTR1020.MTN
		Ø12		Octa	OCTR1220.MTN
				Non-Octa	NOTR1220.MTN
	Wide	Ø10		Octa	OCTW1020.MTN
				Non-Octa	NOTW1020.MTN
		Ø12		Octa	OCTW1220.MTN
				Non-Octa	NOTW1220.MTN



Extra EZ Connection

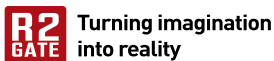
System	Color	Fixture Core	Diameter	Length	Type	Ref.C
AnyRidge	Gold	3.3	Ø10	20	Hex	ARTXN1020.MTN
					Non-Hex	ARTXN1020N.MTN
			Ø12		Hex	ARTXN1220.MTN
					Non-Hex	ARTXN1220N.MTN
			Ø10		Hex	ARTXM1020.MTN
					Non-Hex	ARTXM1020N.MTN
		Ø12	Hex		ARTXM1220.MTN	
			Non-Hex		ARTXM1220N.MTN	
		4.8	Ø10		Hex	ARTXL1020.MTN
					Non-Hex	ARTXL1020N.MTN
			Ø12		Hex	ARTXL1220.MTN
					Non-Hex	ARTXL1220N.MTN





Expert Digital Equipment Support

We can support Scanner, Machine, Implant Library,
CAD, CAM, all of Digital Process.



Digital Support



+82-53-222-3200



service@r2gate.com



R2GATE[®] : MegaGen Digital Solution
by MEGA^AGEN



Head Office & Factory
Gangnam Office

45, Secheon-ro 7-gil, Dasa-eup, Dalseong-gun, Daegu, Korea
MegaGen Tower, 607 Seolleung-ro, Gangnam-gu, Seoul, Korea

T. +82-1544-2285
T. +82-1566-2338