

Material

Easy & Simple for
Dental Practice



Material

004 I. MEGA SIL™

006 II. EZ Seal®

007 III. EZ Print

008 IV. EZ Cassette

Material

I. Impression Material MEGA SIL™

Description	Type	Ref.C
Dental Impression	Light body 50ml	NOS-MLIGHT
	Heavy body 50ml	NOS-MHEAVY
MEGA SIL BITE	50ml	MSBC

- Reasonable Price
- High Quality



Light Body



Heavy Body



Bite registration

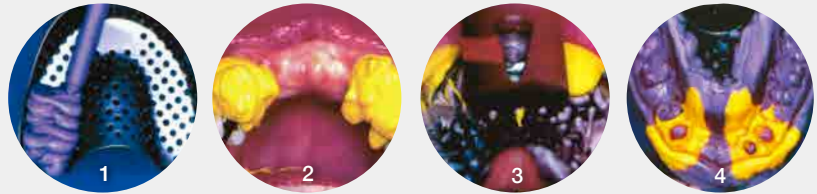
1. Heavy Body

1. Smooth mixing and injection reduce fatigue for the user.
2. Free from taste and scent, Heavy Body prevents excessive patient salivation.
3. High elasticity enables easy removal with no deformation after curing thanks to correct hardness.
4. Thixotropic - does not slide from a tray.
5. High affinity of plaster enables an accurate modeling.

2. Light Body

1. Remarkably uniform smoothness highly thixotropic Light Body of the prevents running in the mouth.
2. Excellent hydrophilicity and ideal flowability give Light Body delicate a reproducibility enable precision modeling.
3. High elasticity and tear strength guarantees a safety while dental impression.
4. High affinity with plaster enables accurate modeling.

1. Clinical cases with MEGA SIL Heavy Body / Light Body

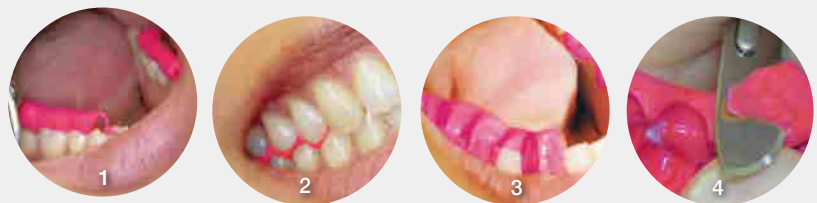


1. Dispense 'MEGA SIL Heavy Body' material into tray, Filling it to the height of the tray. Keep a mixed tip submerged in Heavy Body material to avoid air bubbles.
2. After drying the teeth, inject the Light Body material onto teeth or into a tray.
3. Insert tray straight and evenly into mouth avoid rotation.
4. Use a timer, and follow recommended setting time in mouth. Remove tray from mouth, rinse, dry and disinfect impression before shipping.

3. Bite Registration

1. Reinforced hardness and least transformational change to guarantee accurate positioning during mounting. (Shore-A-hardness of 93)
2. Provides sufficient time 30 seconds to imprint the entire mandibular arch.
3. Short time to produce imprinted model for 90 seconds hardening time.
4. Provides most accurate bite form with minimum mouth irritation.
5. Less transformational change which prevents re-movement after usage.

1. Clinical cases with MEGA SIL Bite registration



1. Direct application of MEGA SIL Bite.
2. Patient in desired occlusion.
3. Bite registration before removal.
4. Easy to cut with a scalpel or a silicone cutter.

4. Application

	Mixing Time	Working Time	Setting Time
Heavy Body Light Body	Auto mix	≤ 1 min	≤ 4 min
Bite		≤ 0.5 min	≤ 1.5 min

II. Screw hole sealing material EZ Seal®

Description	System	Ref.C
EZ Seal	AnyRidge	EZSP21K
	EZ Plus In. MegaFix AnyOne In.	EZSP22K
	EZ Plus Ex. ExFeel In/Ex. AnyOne Ex.	EZSP24K
	Rescue	EZSP31K



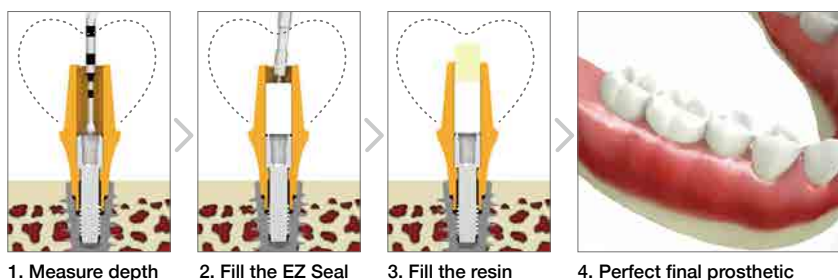
- ➔ Simple!
- ➔ Easy!
- ➔ Convenient!



1. Easy to Fill & Remove

- ✓ Convenient size : Diameter (Ø2.1, Ø2.2, Ø2.4, Ø3.1), Length (1, 2, 3, 4, 5mm and free)
- ✓ Convenient tools : EZ carrier
- ✓ Retrievable material (Silicon)

2. Implant completed in a simple and convenient way!



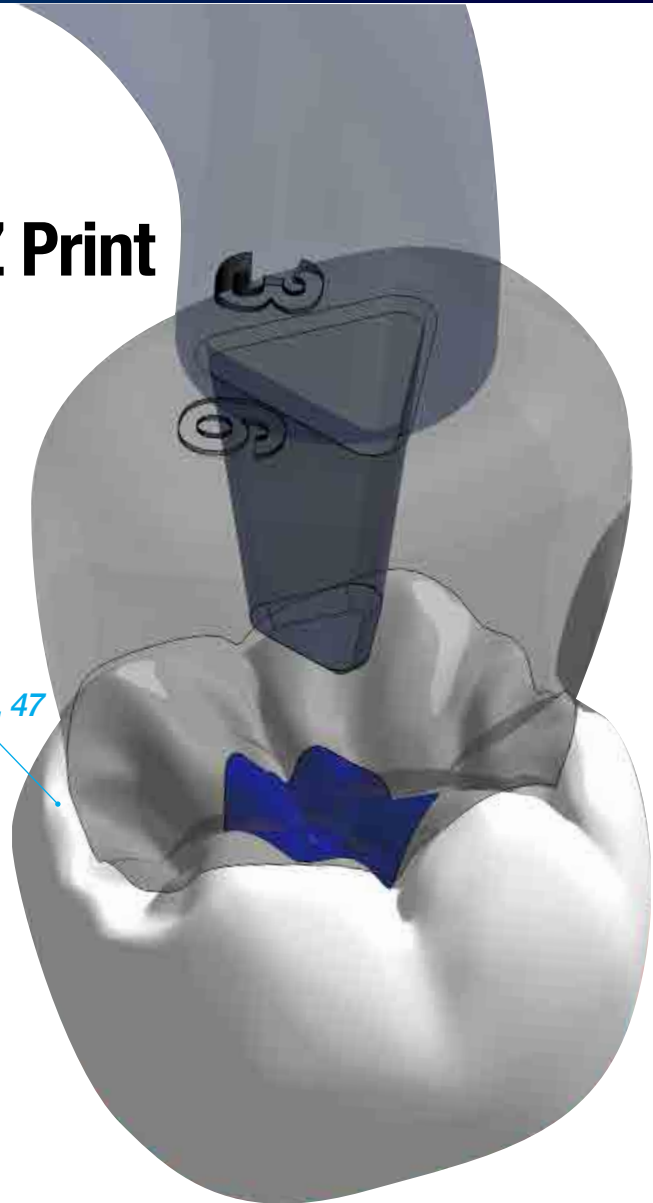
3. Choose appropriately for your system!



III. Precise occlusal surface with EZ Print

Description	Ref.C
EZ Print	EZPP

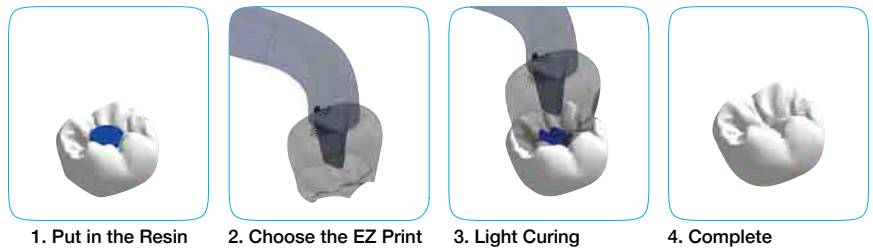
➔ Can be applied to 8 molars for standardized occlusal surface
 Maxilla - #16, 17, 26, 27 / Mandible - #36, 37, 46, 47



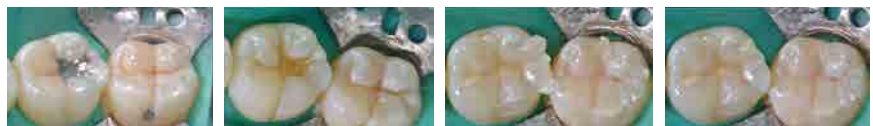
1. EZ Print Concept

How can we easily and precisely shape the occlusal surface for molars? Precise occlusal surface shape is a must for excellent masticatory function and esthetics. However, it was a boring challenge with long, elaborative instrument operation that lab technicians had to patiently bear. How about using EZ Print? With additional effort of clinicians, clinicians can shape esthetical and functional surface; we expect higher satisfaction of patients.

2. How to use EZ Print



3. Clinical Case



IV. Customized Compact Sterilizing EZ Cassette

Description	QTY	Ref.C
EZ Cassette	10EA	KCMEC2000

- ➔ *Small in Size!!*
- ➔ *Light in Weight!*
- ➔ *Simple to Use!*



1. Surgical instruments that can be used



Pincette/ Mirror/ Explorer/ Syringe Tip
 *Be careful while inserting the instruments

2. Caution

- ✓ Sterilization
 - Surgical tools should be sterilized at the temperature of 132°C up to 134°C (269.6°F to 273.2°F) for 15 minutes by autoclave, and then dry it for 30 minutes.
 - Kit Case can be deformed, if the temperature exceeds more than 149°C(300.2°F).
- ✓ Storage
 - Sterilized surgical tools must be kept in a dry, clean and dust-free environment at temperature of 15°C to 30°C(59°F to 86°F).

3. How to use EZ Cassette



1. Collect the surgical instruments that were being used.
2. Insert the surgical instruments into EZ-CASSETTE.
3. Close both end of the lids and cleanse with ultrasonic cleaner.
4. Seal up the Sterilization Pouch after placing both EZ-CASSETTE and Suction Tip in to it.
5. Sterilize in an autoclave.
6. Storage after drying.

What is the **AnyRidge** way?

For clinicians...

less invasive, fast,
simple, predictable,
& esthetically
superior implant
treatment

Realising the
ONE-DAY Implant™

For patients...

strong new
esthetic &
functional teeth via
painless & rapid
treatment

AnyRidge does it right!

AnyRidge goes FAR BEYOND standard expectations of dental implants...

Key benefits of AnyRidge implants become evident
when considering immediate loading...

With the new loading protocol developed based on
clinical results with AnyRidge, your patients have
new smiles faster than ever....

- Guaranteed excellent stability, even with compromised bone density
- Less reduction & more preservation of cortical bone
- Wider implant possibilities than crestal width
- Clinically proven safety
- Faster & stronger osseointegration
- Esthetic design & varied abutment selection
- Super implant-prosthetic connection
- Innovative R2GATE software for completing implant & prosthesis in ONE DAY



Material



Head Office & Factory
Gangnam Office

45, Secheon-ro 7-gil, Dasa-eup, Dalseong-gun, Daegu, Korea
MegaGen Tower, 607 Seolleung-ro, Gangnam-gu, Seoul, Korea

T. +82-1544-2285
T. +82-1566-2338